



**RATNAVEER®**



**CORPORATE PROFILE**

# CONTENTS

1. COMPANY OVERVIEW
2. GROWTH & MILESTONES
3. STRATEGIC DIRECTION
4. LOCATION & ALLIANCES
5. MARKET OUTLOOK
6. CORE PRODUCTS
7. FINANCIAL STATEMENTS & METRICS
8. OUR LEGACY , LEADERSHIP & RECOGNITION

# RATNAVEER at a glance



## GLOBAL REACH

**31**

COUNTRIES EXPORTED  
TO

**215**

TOTAL CLIENTS  
(NATIONAL +  
INTERNATIONAL)

**88**

GLOBAL DISTRIBUTION  
PARTNERS

**800+**

EMPLOYEES



**RATNAVEER®**

STRATEGIC PRESENCE IN  
DUBAI



## PRODUCT STRENGTH

**1.5+ BILLION  
UNITS**

ANNUAL WASHER OUTPUT

**2500+**

TOTAL FASTENER SKUS

**36,129**

METRIC TONNES  
PROCESSED

**100%**



FORWARD & BACKWARD  
INTEGRATION

**5**

TOTAL MANUFACTURING  
FACILITIES



## CERTIFICATIONS & COMPLIANCE



EXPORT HOUSE



CE CERTIFIED



ISO 145001:2018 | 9001:2015 |  
14001:2015

**100%**



GREEN POWER  
COMPANY

**BBB+**

POSITIVE OUTLOOK  
CREDIT RATING

# A WORLD OF PRECISION

# IPO PERFORMANCE HIGHLIGHTS

1st Indian Company Listed under T+3 listing norms on NSE & BSE Mainboard

## IPO Size: ₹165.03 Cr

**₹ 10,854 Cr**

**TOTAL  
SUBSCRIPTION  
AMOUNT**

**94 x**

**Highest  
Subscription  
FY23 on NSE &  
BSE Mainboard**

**20 lakh +**

**TOTAL  
SUBSCRIPTION  
COUNT**

**32%**



**LISTING  
PREMIUM**

**A WORLD OF PRECISION**



**MD & CEO OF NSE LTD. MR. ASHISH CHAUHAN WITH MD OF RATNAVEER PRECISION ENGINEERING LTD, MR. VIJAY SANGHAVI AT NSE LISTING CEREMONY ON 11TH SEP' 2023 AT NSE LTD., MUMBAI**

# COMPANY OVERVIEW



# ABOUT RATNAVEER

Ratnaveer is India's leading exporter of stainless-steel washers, with over 3,300 SKUs. Backed by more than 20 years of expertise, we leverage the latest technologies to design and manufacture high-value washers. We partner with OEMs across automotive, railways, pharmaceuticals, aerospace, construction and other industries, exporting to over 30 countries worldwide.

EXPORTED TO

**31**

COUNTRIES



**NO.1**

EXPORTER OF MORE  
THAN 3300 TYPES OF  
HIGH VALUE ADDED  
WASHERS FROM  
INDIA

**FORTUNE  
500**

IN COOPERATION  
WITH FORTUNE  
500 COMPANIES

**TOP 11  
GLOBAL  
DISTRIBUTORS**

RIGOROUSLY TESTED AND  
APPROVED BY GLOBAL  
OEMS, AND DISTRIBUTED  
WORLDWIDE THROUGH 11  
TOP PARTNERS.

 **100%**

**GREEN POWER  
COMPANY**

POWERED BY  
RENEWABLE ENERGY  
ACROSS FACILITIES.

# OUR COMPASS OF VALUES



# RATNAVEER PRECISION ENGINEERING LIMITED

## BOARD OF DIRECTORS

**VIJAY  
SANGHVI**

MANAGING DIRECTOR &  
CFO

**BABULAL  
CHAPLOT**

WHOLE TIME DIRECTOR

**CA R. V.  
SREERAM**

INDEPENDENT  
DIRECTOR

**CA RAJASH  
SHAH**

INDEPENDENT  
DIRECTOR

**DR. BINITA  
VERDIA**

DIRECTOR

**CS KARUNA  
ADVANI**

NON-EXECUTIVE  
DIRECTOR

**UMESH SINH  
RATHOD**

INDEPENDENT  
DIRECTOR

**UMANG  
LALPURAWALA**

CS & COMPLIANCE  
OFFICER

# BOARD OF DIRECTORS

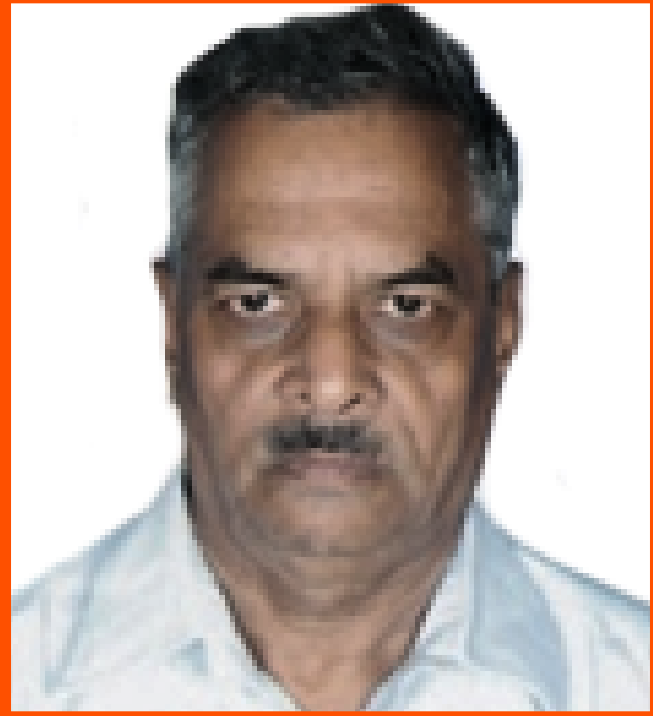


## **VIJAY SANGHVI**

**MANAGING DIRECTOR & CFO**

**Mr. Vijay Sanghvi is a Commerce graduate from MS University, Vadodara, with over 25 years' experience in the ferrous and non-ferrous metals industry. As founder and Managing Director, he leads production, marketing, export strategy, new-product development and customer relations, driving the company's high-growth vision.**

# BOARD OF DIRECTORS



## **BABULAL CHAPLOT**

### WHOLE TIME DIRECTOR

**Mr. Babulal Chaplot is the Whole-Time Director of the company. A BE in Mechanical Engineering from MS University, Baroda, he brings over 40 years' experience in purchase, production and project planning at Hindustan Tractors, Girnar Scooters and Hindustan Earth Movers. Having joined the company 16 years ago and appointed Executive Director in 2011, he now oversees both production and commercial functions.**

# BOARD OF DIRECTORS



## **DR. BINITA VERDIA**

### NON EXECUTIVE DIRECTOR

**Dr. Binita Verdia serves as a Non-Executive Director. She holds a Ph.D. in Botany—with a specialization in plant tissue culture and its applications—and an M.Sc., both from Maharaja Sayaji Rao University of Vadodara. With over 20 years' experience across corporate and NGO management, she has led CSR initiatives, conducted research, and developed expertise in ESG practices.**

# BOARD OF DIRECTORS



## **PCS KARUNA ADVANI**

### INDEPENDENT DIRECTOR

**Ms. Karuna Advani is an Independent Director and a Fellow of the Institute of Company Secretaries of India, holding an LLM. She specializes in company law, SEBI regulations, FEMA and the Insolvency & Bankruptcy Code. Since 2022, she has served as a Practicing Company Secretary, delivering robust corporate governance and compliance support to a diverse range of organizations.**

## BOARD OF DIRECTORS



### **CA SREERAM VISHWANATHAN**

INDEPENDENT DIRECTOR

**Mr. Sreeram Vishwanathan R. is an Independent Director who qualified as a CA in 1991 and as a CS from ICSI in 1995. He practices as a CA with ADSS & Co., having served as Section Officer (Commercial) at the Indian Audit and Accounts Department and auditing oil, petrochemical and hydrocarbon PSUs. He lectured on laws taxes in Baroda; his firm manages statutory tax compliance.**

# BOARD OF DIRECTORS



## **CA RAJASH SHAH**

### INDEPENDENT DIRECTOR

**CA Rajash Shah is an Independent Director and Fellow Chartered Accountant with 20 years' experience in credit analysis, fund planning and raising. He currently heads Finance & Accounts at Dineshchandra R. Agrawal Infracon Pvt. Ltd., overseeing international business setups, compliance, audits and client liaison, and raised over ₹2,200 crore in five months through acquisitions and non-convertible debentures.**

## KEY MANAGEMENT PERSONNEL



### **CS UMANG LALPURWALA**

**COMPANY SECRETARY & COMPLIANCE OFFICER**

**CS Umang Lalpurwala serves as Company Secretary and Compliance Officer, bringing 11 years' expertise in Company Law, annual compliance, DIN management, board and AGM convenings, Articles amendments, charges filings and annual report drafting, alongside MIS preparation. Well-versed in SEBI LODR regulations, he handles shareholder queries, dividend processing and liaises with BSE, NSE and RTAs for listed-company compliance.**

# GROWTH & MILESTONES





## 25 YEARS OF EXCELLENCE

Commissioned Washer & Production divisions (added shearing line)



Launched Tool Division & upgraded core production-floor and tool-room technologies



Introduced Spring Washer Division with modernized equipment



Established Finishing-Line Division with new production technology



Expanded Spring Washer capacity & rolled out 70 new product designs



Launched Tube Division & commissioned hi-tech tube-mill project



Began nuts & bolts manufacturing and achieved 100% green-power operations





**MR. VIJAY SANGHVI RECEIVED THE EEPc STAR PERFORMER AWARD FOR INDIA'S HIGHEST WASHER EXPORTS FROM THE HONOURABLE MINISTER OF FINANCE AND CORPORATE AFFAIRS, SMT. NIRMALA SITHARAMAN.**

# EEPC STAR PERFORMER

## 2004-2025



# STRATEGIC DIRECTION



# DRIVING VALUE: OUR BUSINESS STRATEGY



# INVESTMENT RATIONALE

## Product Portfolio Expansion

- Sustain leadership in Washers, Sheet-Metal, Tubes & Pipes, and Finishing-Line Products globally.
- Scale manufacturing capacity to meet growing demand across all core segments.
- Introduce value-engineered products to capture incremental market share.

## Market Expansion

- Leverage strong foothold in high-margin regions (Europe, North America, Asia-Pacific, Japan, Australia).
- Broaden product offering and enter new territories to achieve dominant position by FY 2025.

# INVESTMENT RATIONALE

## Margin Optimization

- Focus on high-margin Washers, Sheet-Metal, Tubes & Pipes, and Finishing-Line portfolios.
- Expand Custom Manufacturing Solutions (CMS) to enhance overall profitability.

## Innovation & IP

- Maintain a 2,500+-SKU portfolio tailored to diverse end-markets.
- Launch > 3 breakthrough products across 3 countries to lead core segments.
- Leverage fully integrated backward facilities (raw materials, in-house dies/tools) for R&D and cost control.

# LOCATION & ALLIANCES



# STRATEGIC LOCATION ADVANTAGES



## Air Connectivity

- Vadodara Airport (BDQ) offers direct flights to Mumbai, New Delhi & Bengaluru.
- New international terminal live since Oct 2016; Gujarat's first "Green Airport."

## Rail Connectivity

- Major junction on Western Railway's Mumbai-Ahmedabad-Delhi corridor.
- Future stop on India's inaugural Mumbai-Ahmedabad high-speed rail line.

## Road & Bus Connectivity

- Situated on NH 48 (Mumbai-Delhi) and NH 47 (Mumbai-Ahmedabad) for seamless road transport.
- Modern bus terminal next to the station, featuring a market, food court & multiplex.

# KEY BANKING PARTNERS



# EXTERNAL RATING



- LONG TERM CREDIT RATING OUTLOOK AS ON 17.03.2025



- SHORT TERM CREDIT RATING OUTLOOK AS ON 17.03.2025

# MARKET OUTLOOK





# GLOBAL INDUSTRIAL FASTENERS: SIZE, DRIVERS & FORECAST

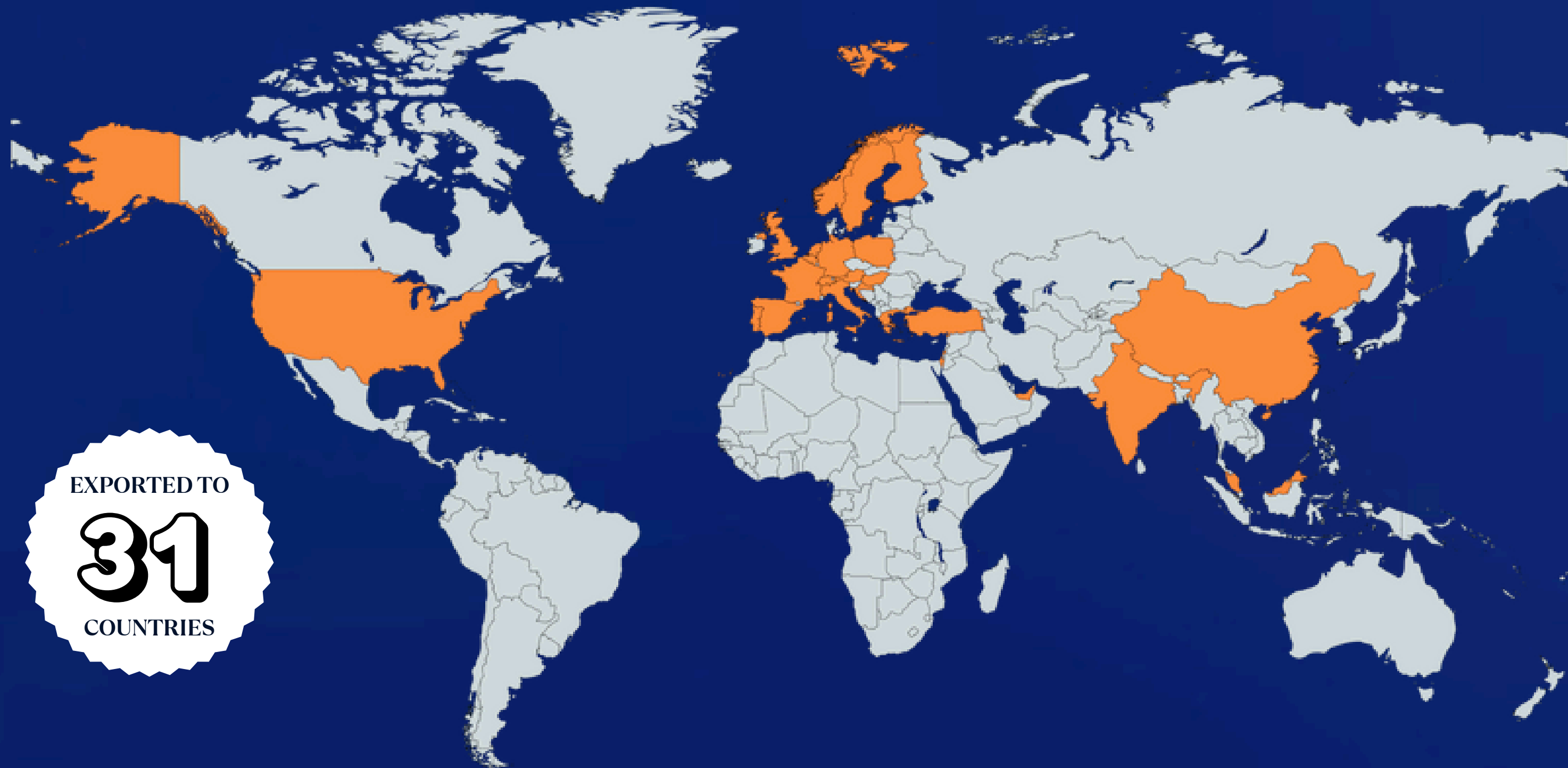
The global industrial fasteners market totaled USD 76.7 billion in 2020—down 6.8% from the 2017–19 average due to COVID-19—and is forecast to climb from USD 79.5 billion in 2021 to USD 106.1 billion by 2028 at a 4.2% CAGR.

Recovery will be fueled by rebounding demand in construction, automotive, aerospace and marine sectors; expanding machinery and durable-goods output; and rapid industrialization in India, China, Thailand and Vietnam. Surging automation investments, favorable demographics, supportive regulations and the rollout of semiconductor fabs and electronics assembly in East Asia—alongside manufacturers' R&D and advanced-technology spend—will drive robust growth through 2031.





# RATNAVEER'S GLOBAL FOOTPRINT



EXPORTED TO  
**31**  
COUNTRIES



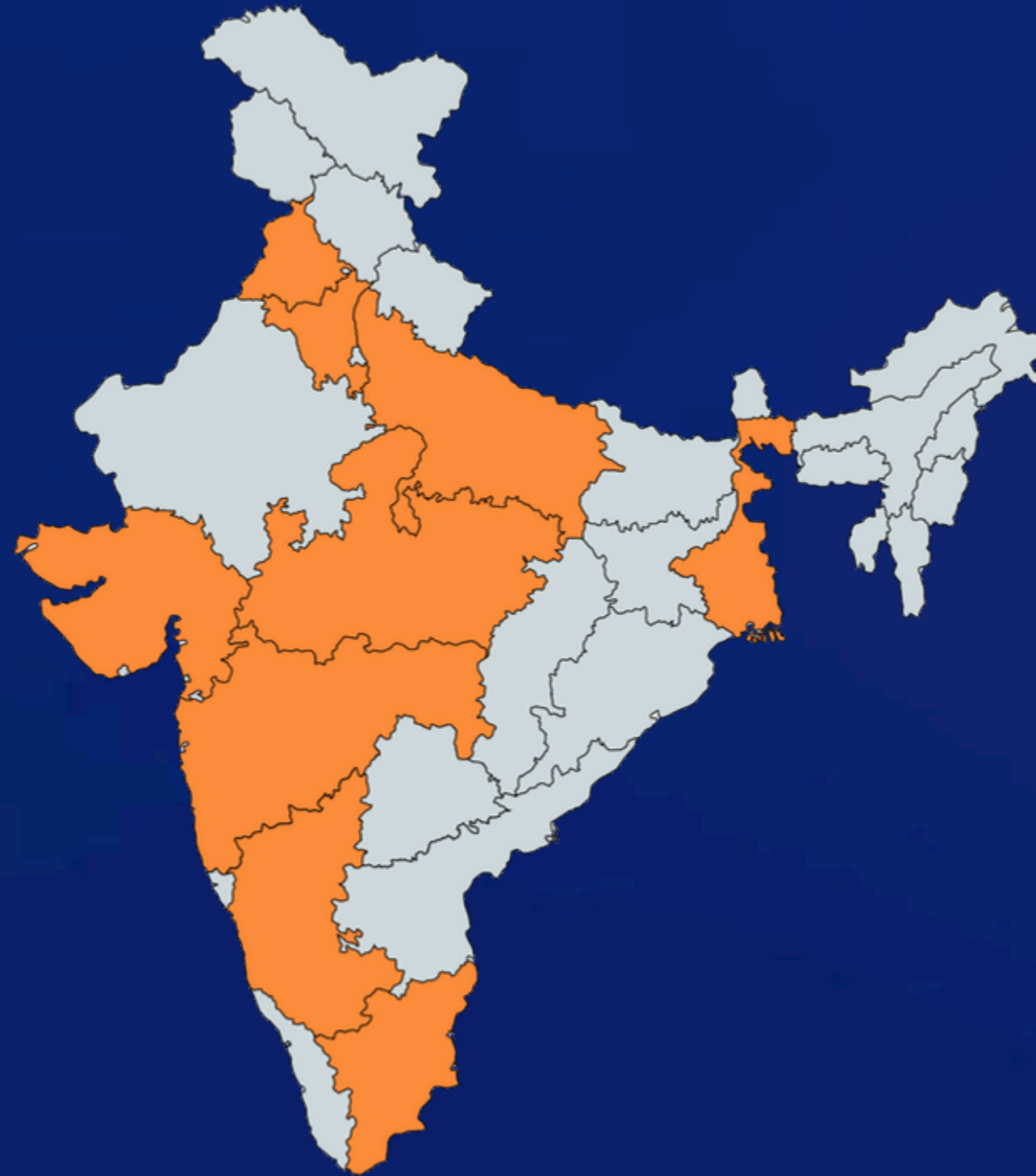
# FASTENERS IN INDIA: MARKET SIZE, TRENDS & PROJECTIONS

India's manufacturing sector—turbocharged by the “Make in India” initiative—is on track to become the world's fifth-largest by 2025, drawing major hi-tech investment. As Asia-Pacific leads global fastener production (fueled by booming construction and automotive industries), India's industrial fasteners market is projected to hit INR 460 billion by 2023, expanding at a 9.6% CAGR since 2018. Key distribution channels include distributors, direct dealers, online platforms and trade events, while recent de-licensing reforms are inviting leading global manufacturers. Demand will be driven primarily by automotive component assembly (engines, chassis, suspension, wheels), followed by construction and broader engineering applications.



# RATNAVEER'S NATIONAL FOOTPRINT

PRESENCE IN  
**9**  
STATES



# SECTORS UNDER COVERAGE

1

## Primary Metals & Minerals

Metals • Cement • Agro & Chemicals • Pharma • Oil & Gas

2

## Chemicals & Pharma

Agro & Chemicals • Pharma

3

## Engineering & Technology

- Defense • Engineering
- Technology • Robotics
- Infrastructure • Aerospace

4

## Automotive & Transportation

Automobiles • Aviation

5

## Consumer & Media

Consumer • Media

6

## Financial & Professional Services

BFSI • Education



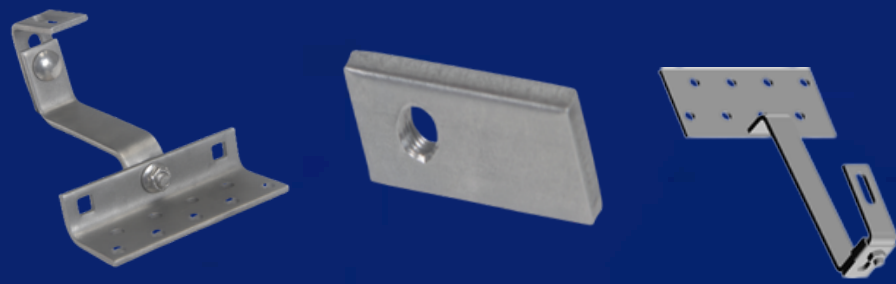
# CORE PRODUCTS & DIVISIONS





# RATNAVEER®

## PRODUCT PORTFOLIO



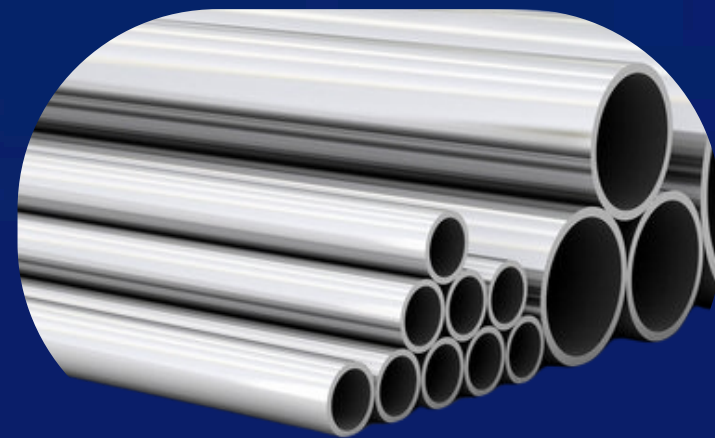
SHEET METAL PRODUCTS



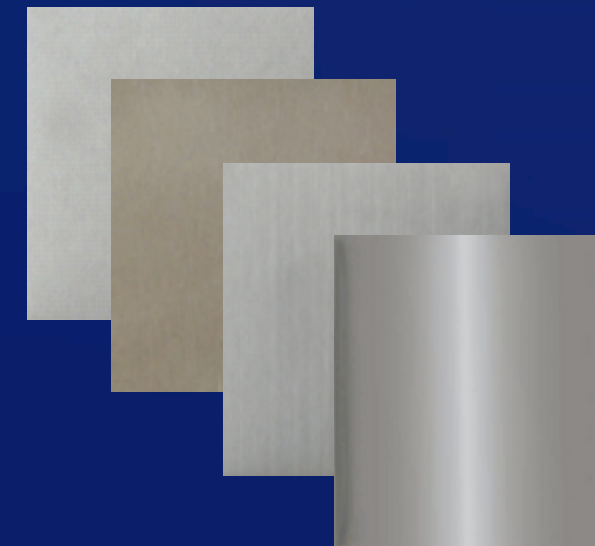
FASTENERS



RETAINING RINGS  
& CIRCLIPS



TUBES & PIPES



FINISHING LINE

# WASHER DIVISION

Ratnaveer's Washer Division is a market leader in stainless-steel washer manufacturing and exports, operating from India's largest single-roof facility dedicated to washer production. As a fully backward-integrated operation, we produce our own dies and tooling in-house and leverage advanced automatic presses to deliver consistently high yields. With the capacity to manufacture over 150 million washers (approximately 400 MT) each month, we adhere to more than 31 international standards. Our product range includes 12 specialized grades—such as 304, 316, 316Ti, 430, Alloy 718, Duplex, Alloy 926, and 1.4122—ensuring cost-effective performance and superior functionality that few competitors can match.



# WASHER DIVISION

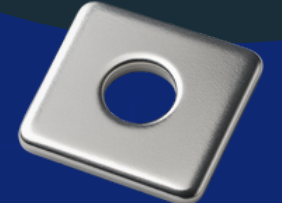
<b>FLAT WASHER</b>	Metric Washer	DIN Standard
		British Standard
		American – ANSI
	Inch Washer	ASME
		Fender Penny Repair Washer
<b>LOCKING WASHER</b>	Hardened Washer	
	Spring Washer	
	Ribbed Contact Locking Washer	
<b>TOOTH LOCK WASHER</b>	Circlip Washer	
	Internal Tooth Washer	
<b>CURVE / DISC WASHER</b>	External Tooth Washer	
	Disc Spring Washer	
	Belleville Washer	
<b>CONSTRUCTION WASHER</b>	Wave Washer	
	Square Washer	
	Square Hole Washer	
	Tab Washer	



PLAIN  
WASHER



SPRING  
WASHER



SQUARE  
WASHER



SERRATED  
WASHER



CIRCLIP



RETAINING  
RING



INTERNAL  
TOOTH WASHER



TAB  
WASHER

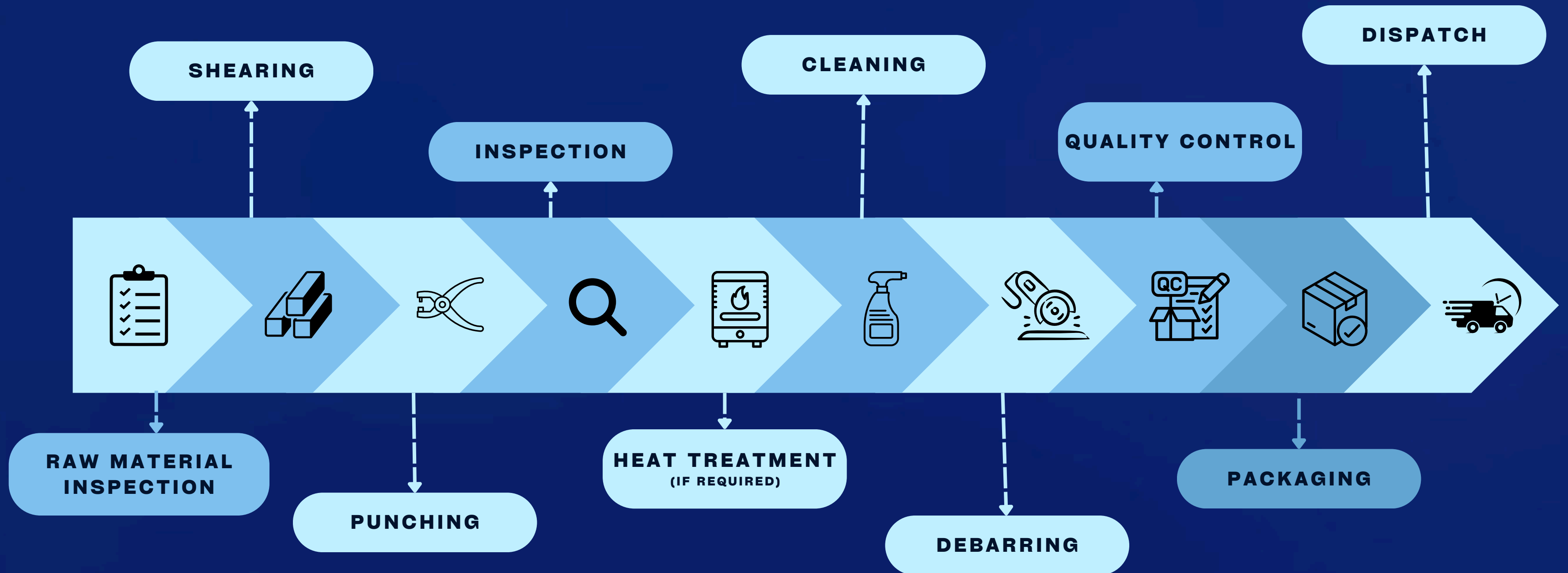


EXTERNAL  
TOOTH WASHER



# WASHER DIVISION

## PROCESS



# APPLICATIONS OF WASHERS



WIND ENERGY



RAILWAYS



INDUSTRIAL



ELECTRO  
MECHANICS

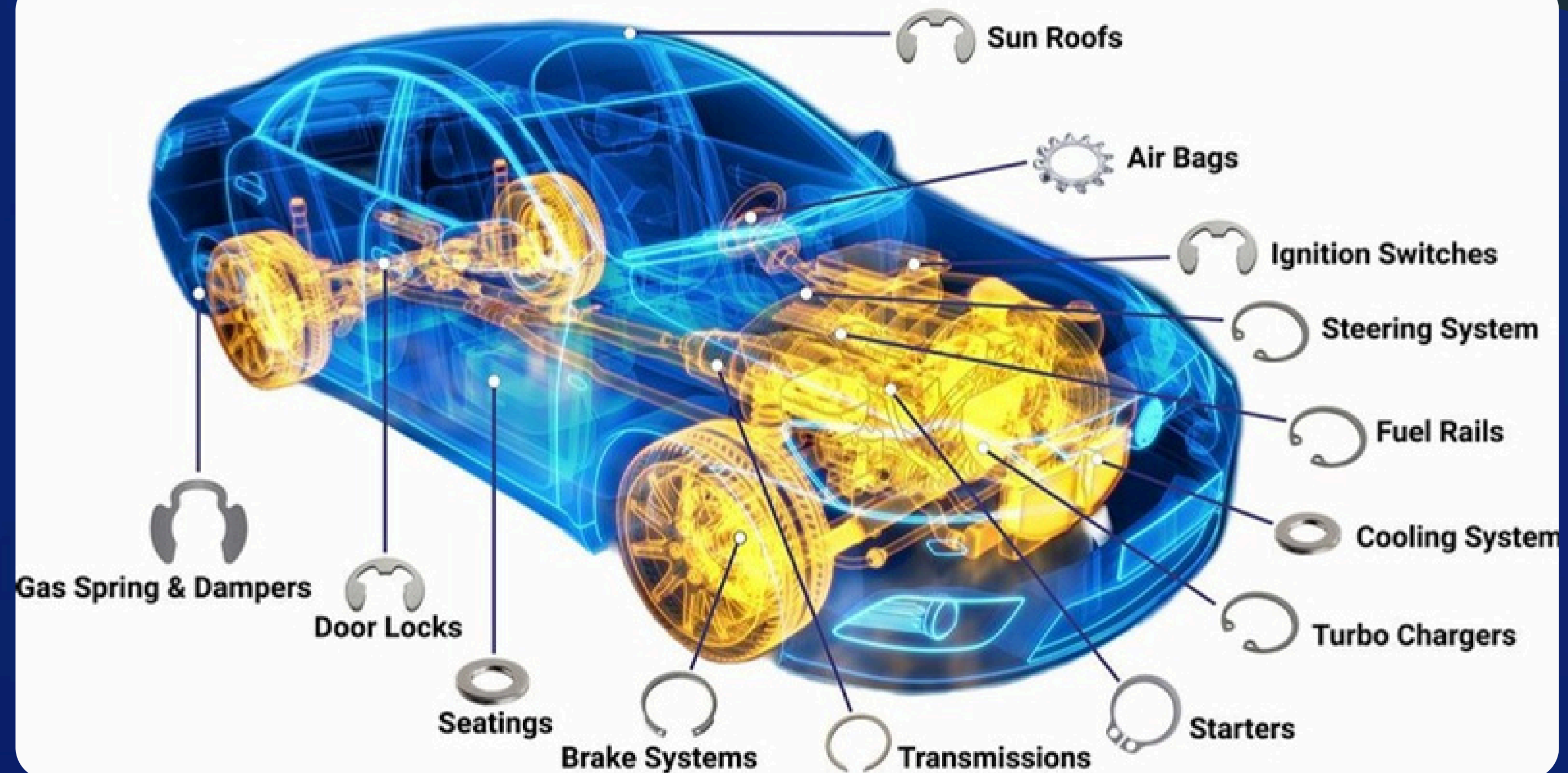


SAFE  
ASSEMBLY

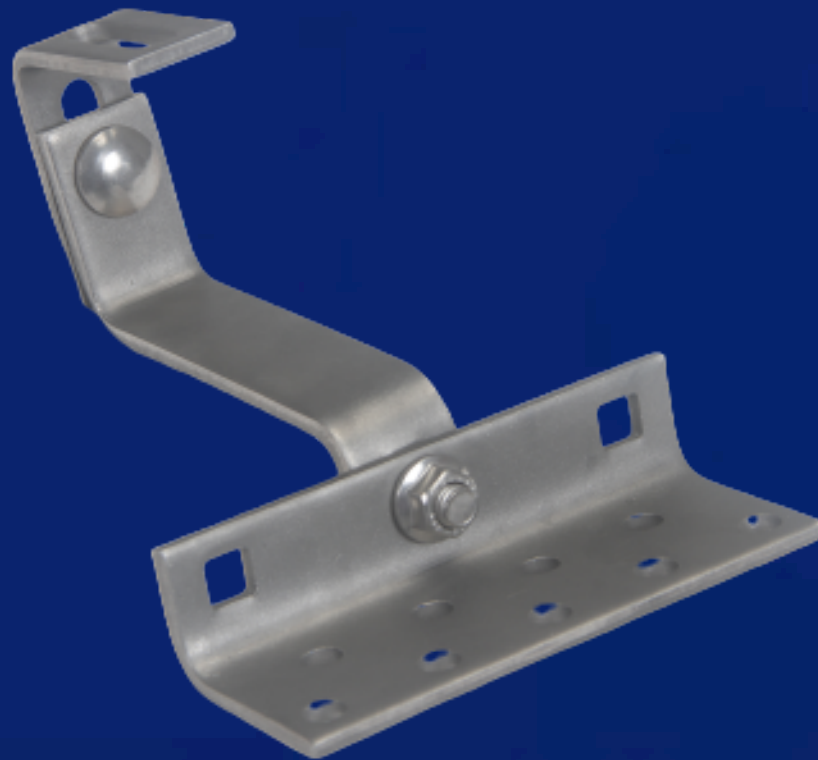


AUTOMOBILES

# E- CLIP & RETAINING RING APPLICATIONS

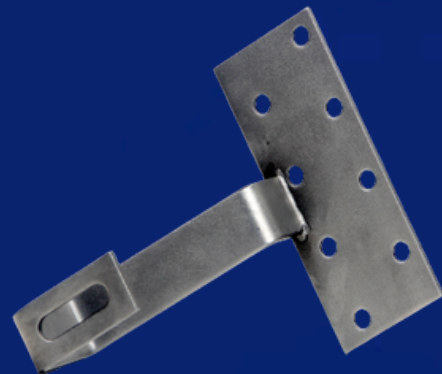


# SHEET METAL COMPONENTS DIVISION



Supporting solar power innovation, these sheet metal components optimize efficiency and durability in various projects. They play a critical role in mounting solar panels and adapting to environmental changes like temperature, wind speed, and air velocity. From installation and design to enhancing overall system performance, our precision-engineered components power the future of sustainable energy. The portfolio includes Hammer Head Bolt, Long Roofing Hook, Reinforcement bracket, Pan Tile Hook, Gweinde Plate, Vario Hook, Fix Hook, and Adapter & Winkle, each designed for robust support and reliable performance under demanding conditions. These custom-engineered parts ensure integration, reliability, and performance in energy installations.

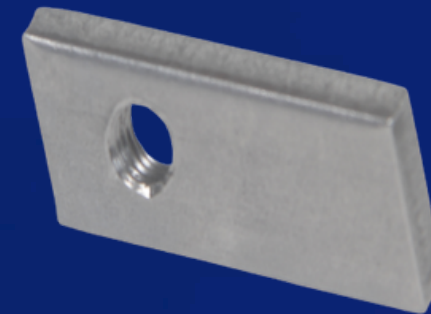
# SHEET METAL COMPONENTS



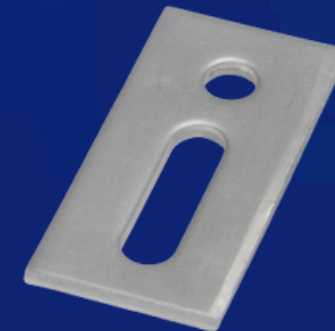
FIX HOOK



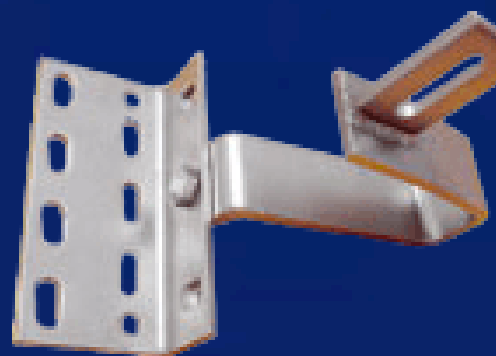
LONG ROOFING  
HOOK



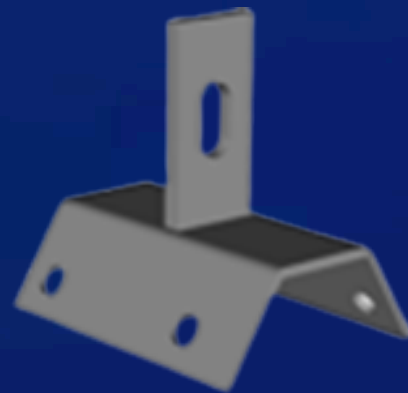
REINFORCEMENT



ADAPTER



PAN TILE  
HOOK



GWEINDE  
PLATE



VARIO HOOK



PAN TILE  
HOOK

# SHEET-METAL COMPONENTS FOR SOLAR MOUNTING SOLUTIONS

## **CUSTOM SOLAR ROOF HOOKS**

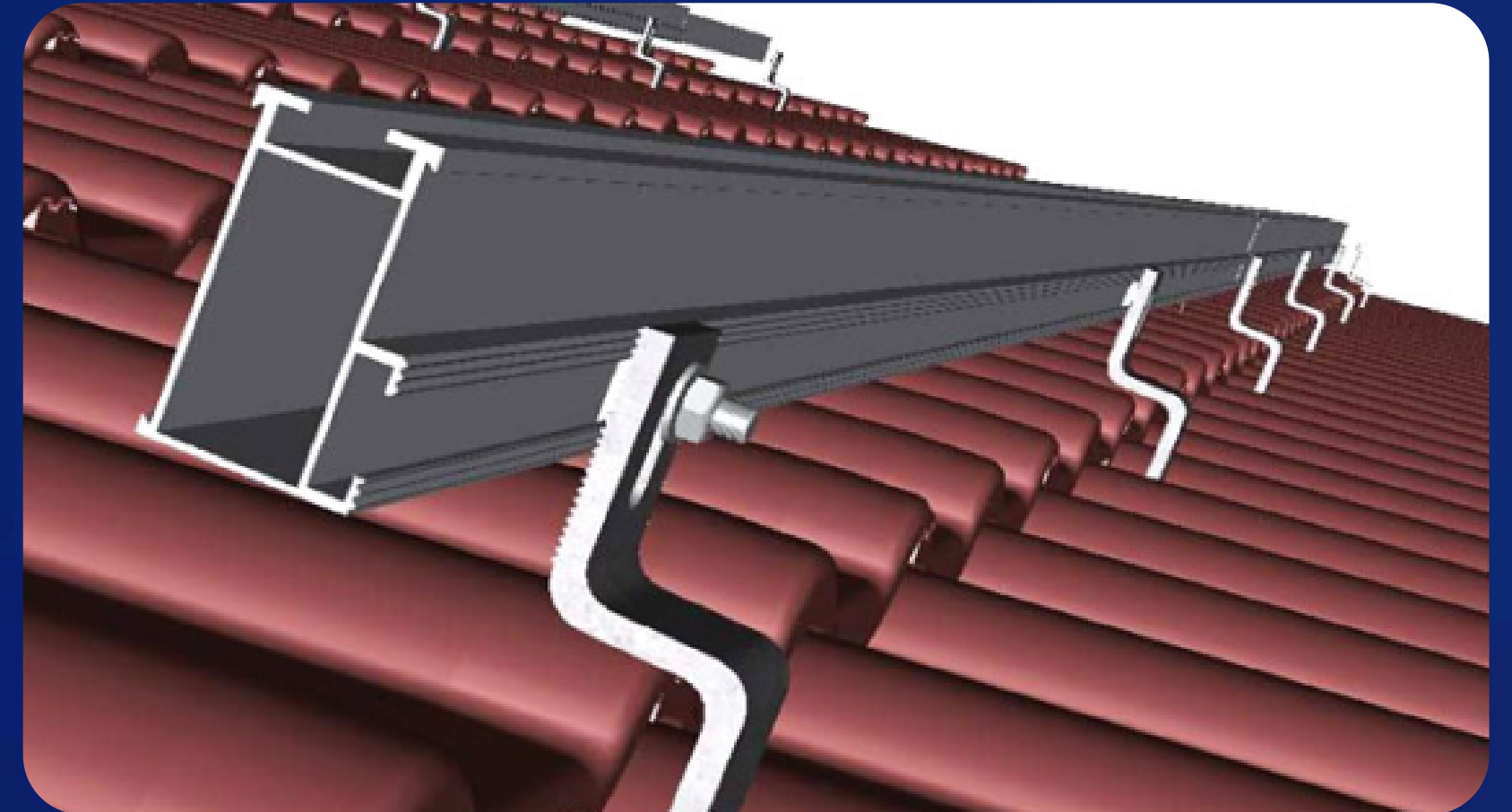
- THREE-POINT ADJUSTMENT BASE FOR INSTALLER FLEXIBILITY
- MANUFACTURED TO CUSTOMER SPECIFICATION

## **ADVANCED COMPONENT DESIGN**

- OPTIMIZED GEOMETRY FOR HIGH YIELD AND LOAD DISTRIBUTION
- CORROSION-RESISTANT STAINLESS-STEEL CONSTRUCTION

## **HIGH-CAPACITY PRODUCTION**

- 200,000 PIECES (≈200 MT) PER MONTH
- 25 DISTINCT HOOK & FIXTURE VARIANTS



# SHEET-METAL COMPONENTS FOR SOLAR MOUNTING SOLUTIONS

## **COST-EFFECTIVE & RELIABLE**

- COMPETITIVE UNIT COSTS DRIVEN BY AUTOMATED FABRICATION
- PROVEN PERFORMANCE IN HARSH OUTDOOR ENVIRONMENTS



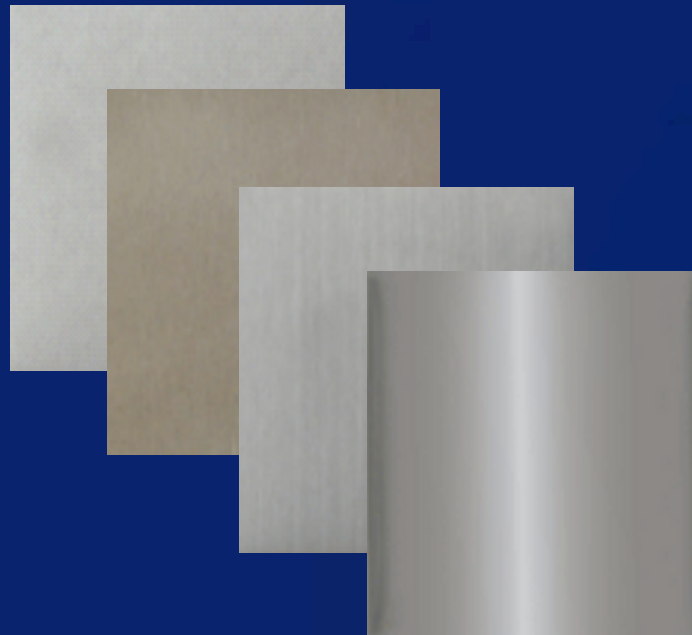
## **EXPANDED ATTACHMENT PORTFOLIO**

- DIVERSE SHEET-METAL FIXTURES FOR ALL MAJOR SOLAR MODULE TYPES
- TURNKEY OEM SUPPLY FOR SOLAR-INDUSTRY MOUNTING SYSTEMS



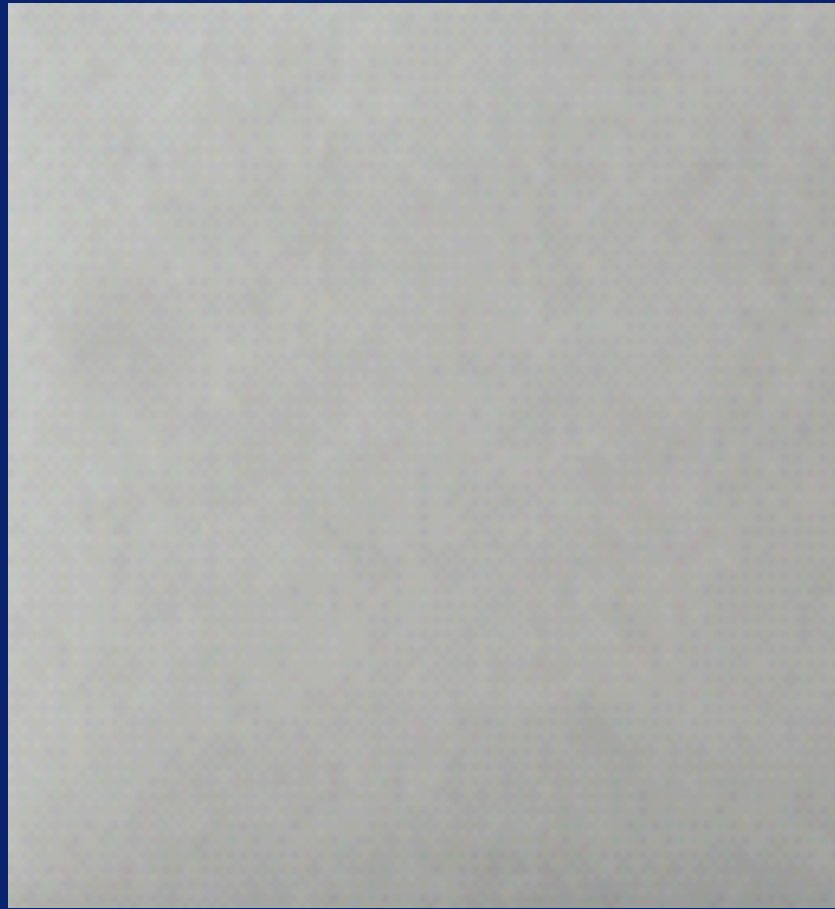
# FINISHING LINE DIVISION

Our Finishing Line Division, ISO 9001 certified, specializes in delivering high-volume, premium decorative finish sheets and surfaces for a wide range of industries. Utilizing advanced brushing, polishing, embossing, color coating, and laminating technologies for stainless steel, we achieve superior textures, finishes, and corrosion resistance. Our skilled team provides customized solutions tailored to architectural, automotive, and industrial specifications. Applications include elevators, home and office appliances, building and construction, and industrial machinery. State-of-the-art equipment ensures consistent quality and turnaround, supporting domestic and global clientele. Commitment to innovation and sustainability drives continuous improvements in production processes to meet evolving market demands. World-class practices.

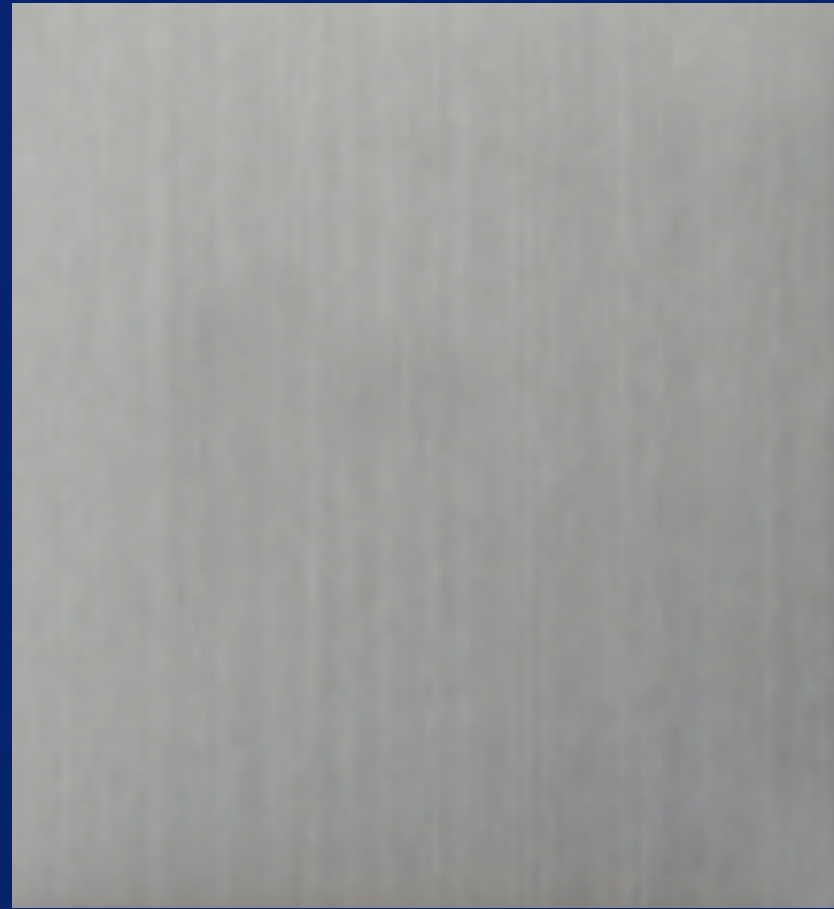




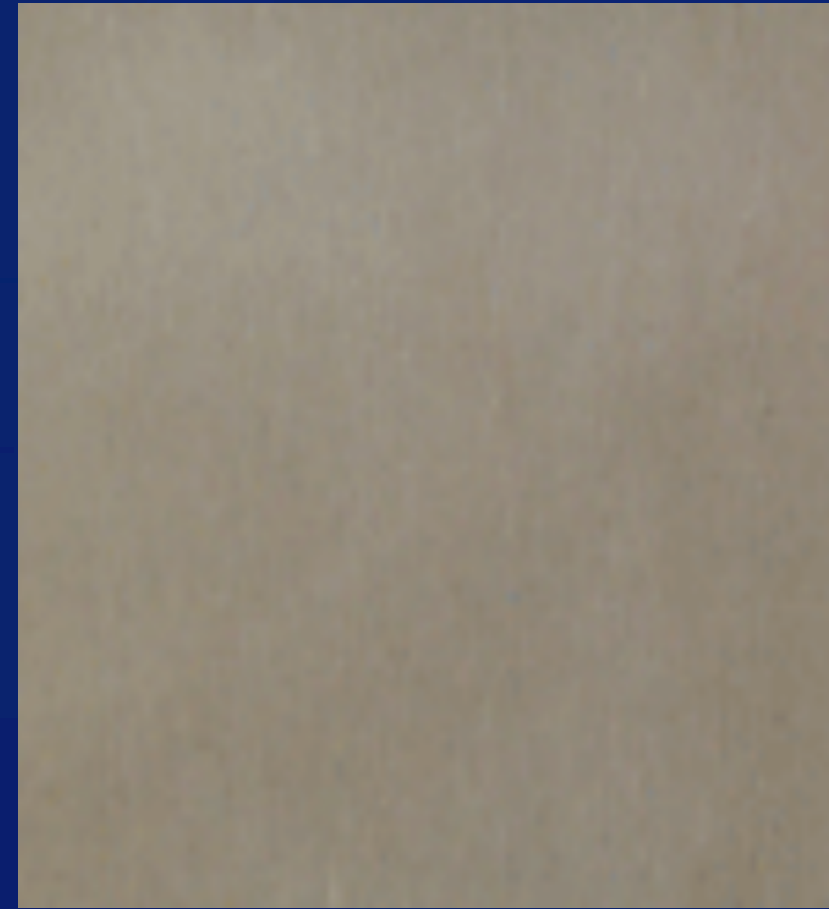
# FINISHING LINE PRODUCTS



NO.4 SATIN  
FINISH



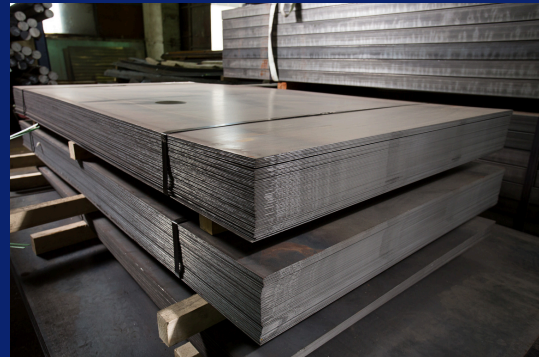
HAIRLINE  
FINISH



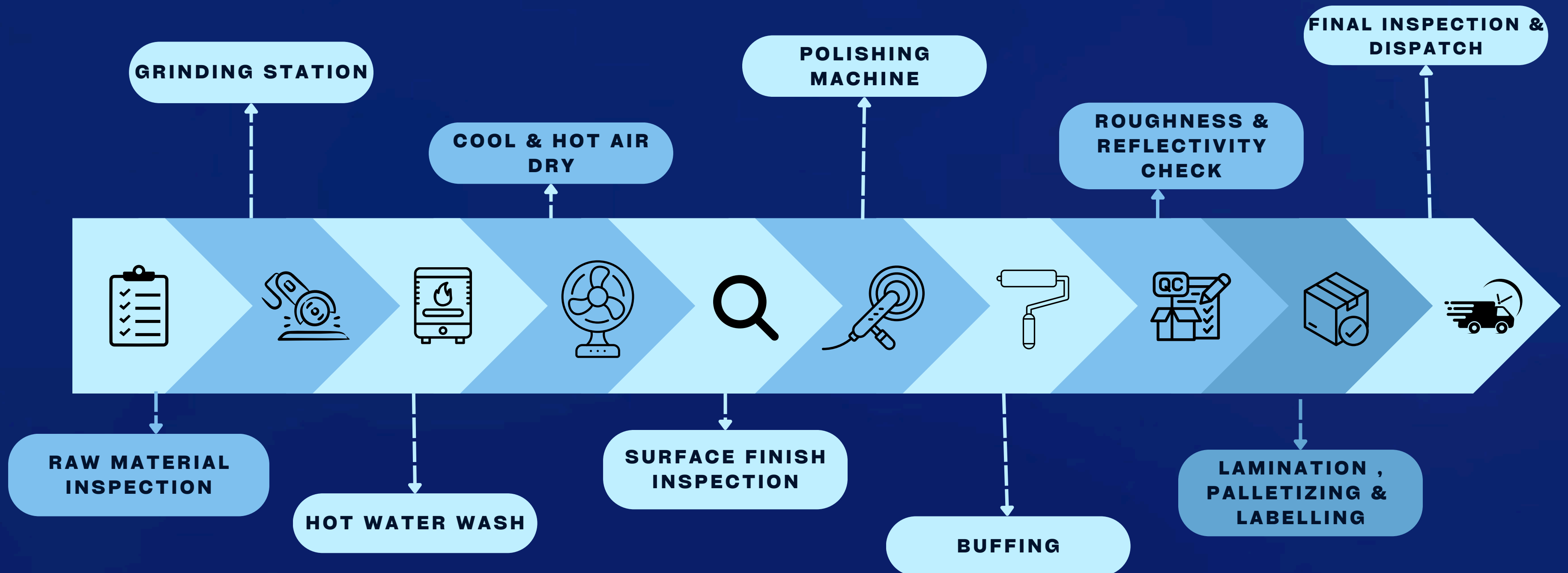
SCOTCH  
BRIGHT SATIN



MIRROR  
NO.8



# SHEET METAL COMPONENTS DIVISION PROCESS



# KEY APPLICATIONS OF DECORATIVE FINISH SHEETS

- ELEVATOR INTERIORS
- DECORATIVE LAMINATES
- HOME & OFFICE APPLIANCE FINISHES
- ARCHITECTURAL & CONSTRUCTION SURFACES
- INDUSTRIAL MACHINERY & EQUIPMENT CLADDING
- ELECTRICAL APPLIANCE FACADES
- TRANSPORTATION INTERIOR FINISHES
- AESTHETIC ENHANCEMENTS (E.G., MALLS, AIRPORTS, METRO RAIL)



# TUBES AND PIPE DIVISION

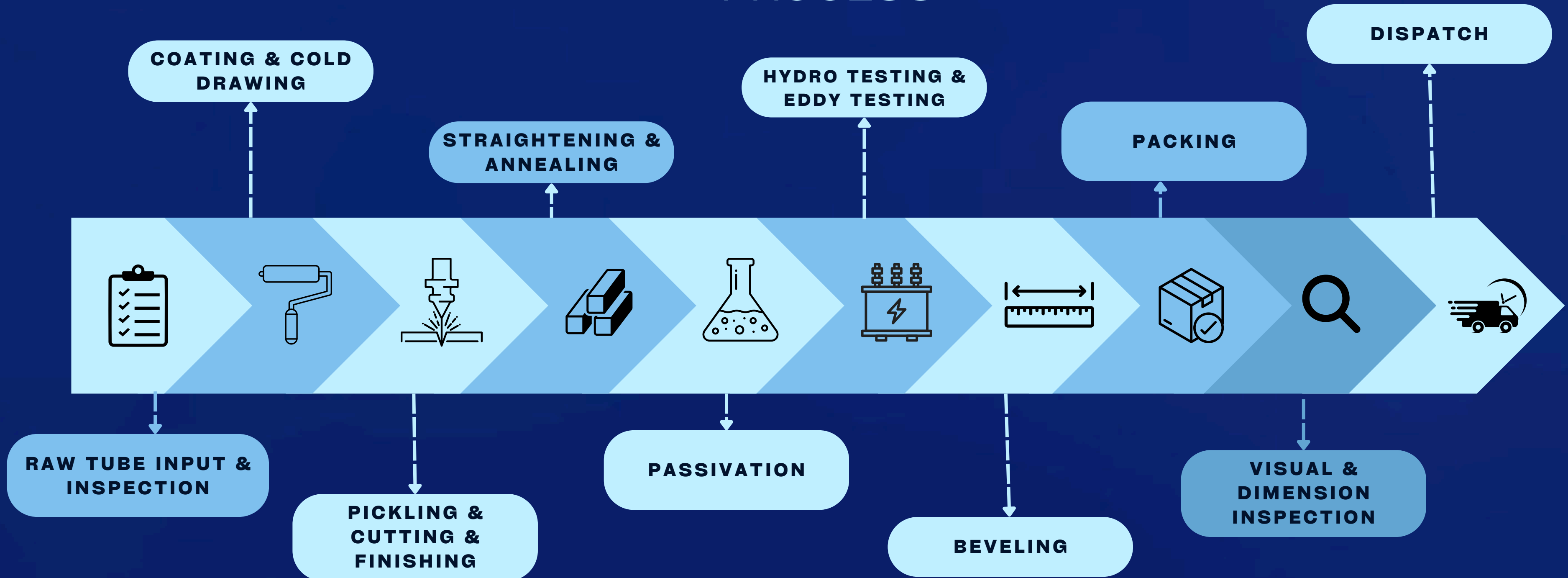


Ratnaveer's Tube & Pipes Division specializes in manufacturing high-precision stainless steel tubes and pipes for diverse industrial applications. Utilizing advanced electropolishing, seamless, and welding technologies, we offer products ranging from small-diameter precision tubes to large-diameter structural pipes. Our state-of-the-art facilities ensure uniform wall thickness, superior surface finish, and exceptional corrosion resistance. Serving sectors such as oil & gas, chemical processing, pharmaceuticals, automotive, and architectural projects, we maintain ISO 9001 certification and adhere to sustainable manufacturing practices. Backed by a robust global distribution network and a dedicated professional team, we deliver uncompromising product quality and on-time service to clients worldwide.

# TUBES & PIPES DIVISION

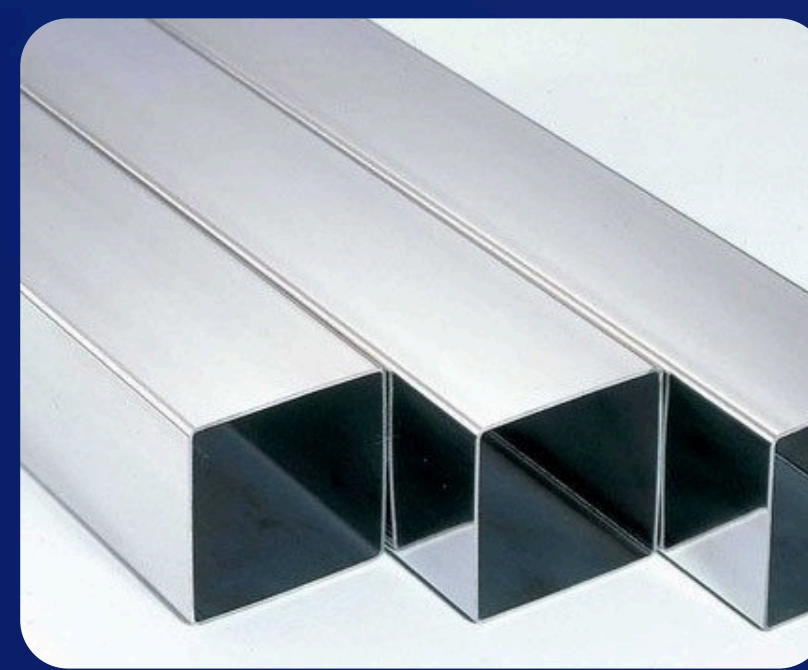
COLD DRAWN TUBES & PIPES

## PROCESS



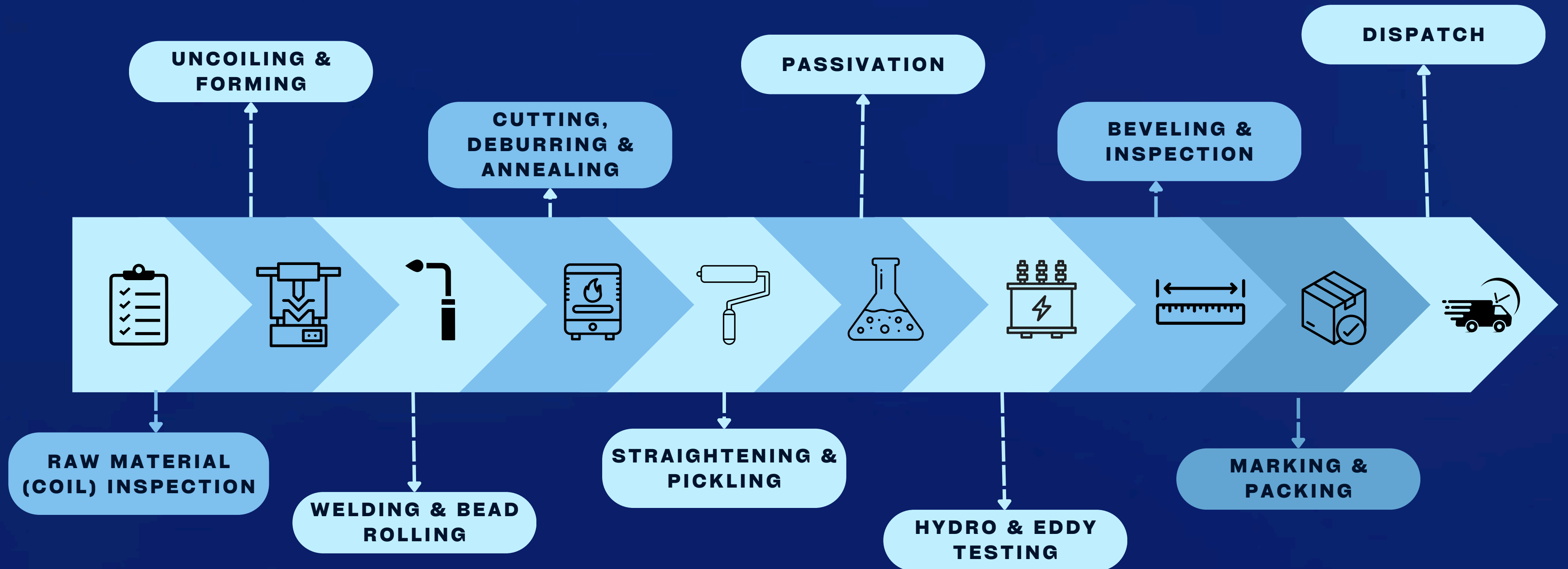
# KEY APPLICATIONS OF TUBES & PIPES

- ELEVATOR GUIDE RAILS & PANNING
- LAMINATE REINFORCEMENT PROFILES
- APPLIANCE STRUCTURAL TUBING (HOME & OFFICE)
- ARCHITECTURAL & CONSTRUCTION FRAMEWORKS
- INDUSTRIAL MACHINERY & EQUIPMENT TUBING
- ELECTRICAL APPLIANCE CONDUITS & HOUSINGS
- TRANSPORTATION SYSTEM PIPING
- AESTHETIC & ARCHITECTURAL FIXTURES (E.G., MALLS, AIRPORTS, METRO RAIL)



# TUBES & PIPES DIVISION

## WELDED TUBES & PIPES PROCESS



# SPECIALIZED APPLICATIONS OF STAINLESS STEEL TUBES & PIPES

- POWER PLANT & EQUIPMENT TUBING
- HEAT EXCHANGER COMPONENTS
- NUCLEAR INDUSTRY PIPING

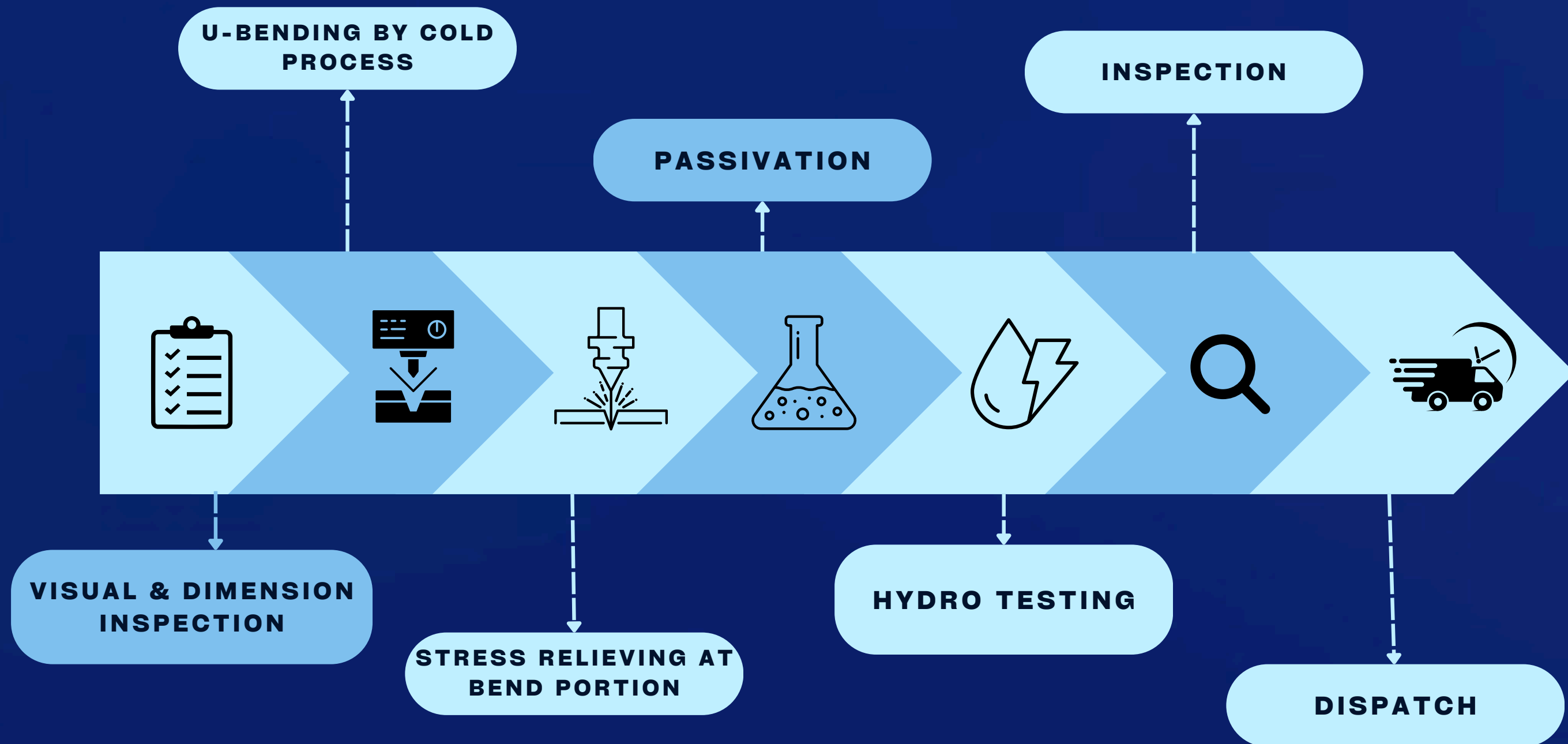


# TUBES & PIPES DIVISION



STAINLESS STEEL “U” TUBES

## PROCESS



# SUSTAINABLE PRODUCTION CYCLE



# FINANCIAL STATEMENTS & METRICS



# FY 2024-25 CONSOLIDATED FINANCIAL HIGHLIGHTS

₹ **895.91** Cr  
↑ YOY 48.72 %

**Total Income**

₹ **46.82** Cr  
↑ YOY 50.78%

**PAT**

**0.77**

**DEBT/EQUITY**

₹ **90.42** Cr  
↑ YOY 58.63%

**EBITDA**

₹ **25028**

**EBITDA/Tonn**

# BALANCE SHEET

Particulars	31.03.2025	31.03.2024	31.03.23	31.03.22	31.03.21	31.03.20	31.03.19	31.03.18	31.03.17
<b>EQUITY &amp; LIABILITIES</b>									
Share Capital	5324.4	4869.4	3489.4	426.22	426.22	426.22	611.22	611.22	611.22
Reserves & Surplus	31767.4	20342.02	7115.98	6171.25	5222.01	4680.43	3864.69	3176.97	2590.55
Long term borrowings	5641.6	3393.92	3400.44	3060.74	2236.95	2899.31	3268.47	1183.46	901.78
Deferred tax liabilities (Net)	1327.7	570.7	470.48	316.75	218.26	128.22	90.69	42.62	8.57
Other Financial Liabilities	0	0	0	33.54	1	3.32	18.91	3.79	5.15
Short term borrowings	13870.1	17330.1	19598.61	16012.1	12838.85	11071.04	8711.58	7555.65	7988.25
Total O/s from MSME	207.1	801.8	40.67						
Trade payables	11860.6	3593.7	3702.64	4126.86	3577.09	3643.47	2250.89	2606.69	879.99
Other current liabilities	4423.5	569.05	837.32	530.59	895.22	1065.35	486.55	580.81	340.7
Provisions	203.8	138.11	249.21	185.11	176.65	326.73	389.16	413.69	292.23
<b>Total</b>	<b>74626.20</b>	<b>51608.80</b>	<b>38904.75</b>	<b>30863.16</b>	<b>25592.25</b>	<b>24244.09</b>	<b>19692.16</b>	<b>16174.89</b>	<b>13618.43</b>
<b>ASSETS</b>									
Fixed assets	24007.2	11904.5	5886.37	4446.16	3522.84	2544.74	1815.09	1483.18	754.29
Non current investments	-	0	-	-	-	-	-	-	5
Current Investments	-	0	-	-	-	-	-	84	-
Long term loans & advances	1,099.80	585.2	321.41	415.01	453.51	453.93	468.41	461.6	295.75
Inventories	29284.6	24492.9	20582.61	17128.32	13552.56	11542.36	9936.19	5730.85	4763.65
Trade receivables	6561.8	4476.54	6337.18	4028.91	3325.04	6393.34	4673.31	6462.62	5831.35
Cash and cash equivalents	6586	5954.16	3037.4	1969.54	1876.91	1798.67	1462.61	924.89	986.46
Short term loans & advances	37.9	6	16.07	31.64	23.62	38.15	608.23	1023.48	971.32
Other current assets	7048.9	4189.5	2723.71	2843.58	2837.77	1472.9	728.32	4.27	10.61
<b>Total</b>	<b>74626.20</b>	<b>51608.80</b>	<b>38904.75</b>	<b>30863.16</b>	<b>25592.25</b>	<b>24244.09</b>	<b>19692.16</b>	<b>16174.89</b>	<b>13618.43</b>

# PROFIT & LOSS STATEMENT

Particulars	31.03.2025	31.03.2024	31.03.23	31.03.22	31.03.21	31.03.20	31.03.19	31.03.18	31.03.17
Revenue from operations	89187.8	59537.9	47974.81	42693.84	35966.35	29691.97	23758.19	18086.85	18912.04
Other income	403.20	702.1	139.71	153.4	438.71	201.41	179.27	332.11	333.27
<b>Total Revenue</b>	<b>89591.00</b>	<b>60240.00</b>	<b>48114.52</b>	<b>42847.24</b>	<b>36405.06</b>	<b>29893.38</b>	<b>23937.46</b>	<b>18418.96</b>	<b>19245.31</b>
Expenses									
Cost of material consumed	79685.3	56673.5	41895.82	37352.23	32245.44	25749.62	21463.36	14858.42	13062.66
Purchases of stock in trade		-	-	-	-	-	-	-	503.46
Changes in inventories of finished goods and work-in-progress	-4232.40	-5452.89	-2662.17	-1856.87	-1691.83	-1642.32	-2793.7	-1369.1	1522.66
Employee benefit expense	1027.4	681.38	787.85	780.47	696.2	692.86	737.88	627.5	533.76
Other expenses	4068.40	2637.6	3390.85	3665.45	2723.49	2436.36	2232.17	2600.22	2382
<b>EBITDA</b>	<b>9042.3</b>	<b>5700.41</b>	<b>4702.17</b>	<b>2905.96</b>	<b>2431.76</b>	<b>2656.86</b>	<b>2297.75</b>	<b>1701.92</b>	<b>1240.77</b>
Depreciation	1709.20	582.4	401.73	393.69	267.36	237.19	221.07	85.1	78.46
EBIT	7333.10	5118.01	4300.44	2512.27	2164.4	2419.67	2076.68	1616.82	1162.31
Finance Cost	1267.80	1208.7	1229.22	1167.09	1205.25	1394.89	1062.51	695.6	725.81
EBT before exceptional & extraordinary items and tax	6065.30	3909.31	3071.22	1345.18	959.15	1024.78	1014.17	921.22	436.5
Exceptional items : Gain on sale of Fixed Asset	0	0	0	0	0	0	1.17	0	4.15
EBT before extraordinary items and tax	6065.3	3909.31	3071.22	1345.18	959.15	1024.78	1015.34	921.22	440.65
Tax	1383.8	804.3	566.78	397.54	413.27	304.7	327.63	334.8	170.55
<b>PAT</b>	<b>4681.5</b>	<b>3105.01</b>	<b>2504.44</b>	<b>947.64</b>	<b>545.88</b>	<b>720.08</b>	<b>687.71</b>	<b>586.42</b>	<b>270.10</b>
EPS	9.31	7.61	7.26	2.75	1.59	2.09	2.00	1.70	0.78

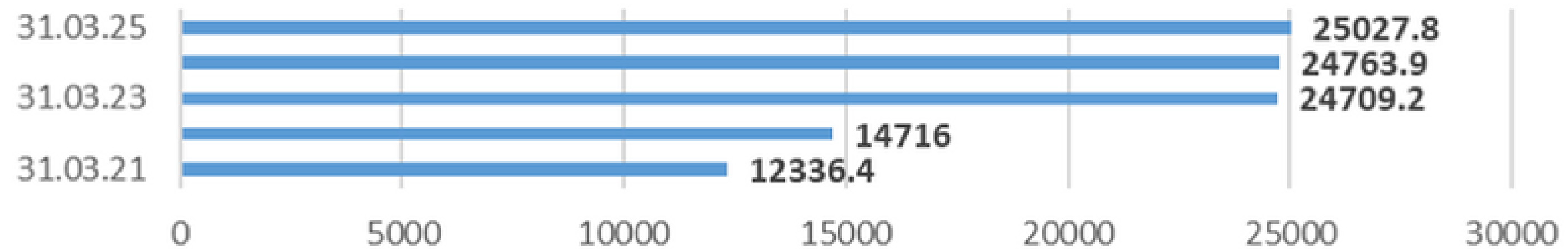
## YOY EBITDA/ TONNE

Particulars	31.03.25	31.03.24	31.03.23	31.03.22	31.03.21	31.03.20	31.03.19
Gross Profit Margin	11.59%	10.91%	11.83%	9.68%	8.82%	10.95%	10.20%
EBITDA Margin	10.14%	9.57%	9.80%	6.81%	6.76%	8.95%	9.67%
PAT Margin	5.25%	5.21%	5.22%	2.22%	1.52%	2.43%	2.89%
Return on Equity	15.03%	17.34%	29.12%	15.48%	10.15%	15.03%	16.64%
Debt Equity Ratio	0.77	0.82	2.17	2.89	2.67	2.74	2.68
Current Ratio	1.62	1.75	1.34	1.24	1.24	1.32	1.47

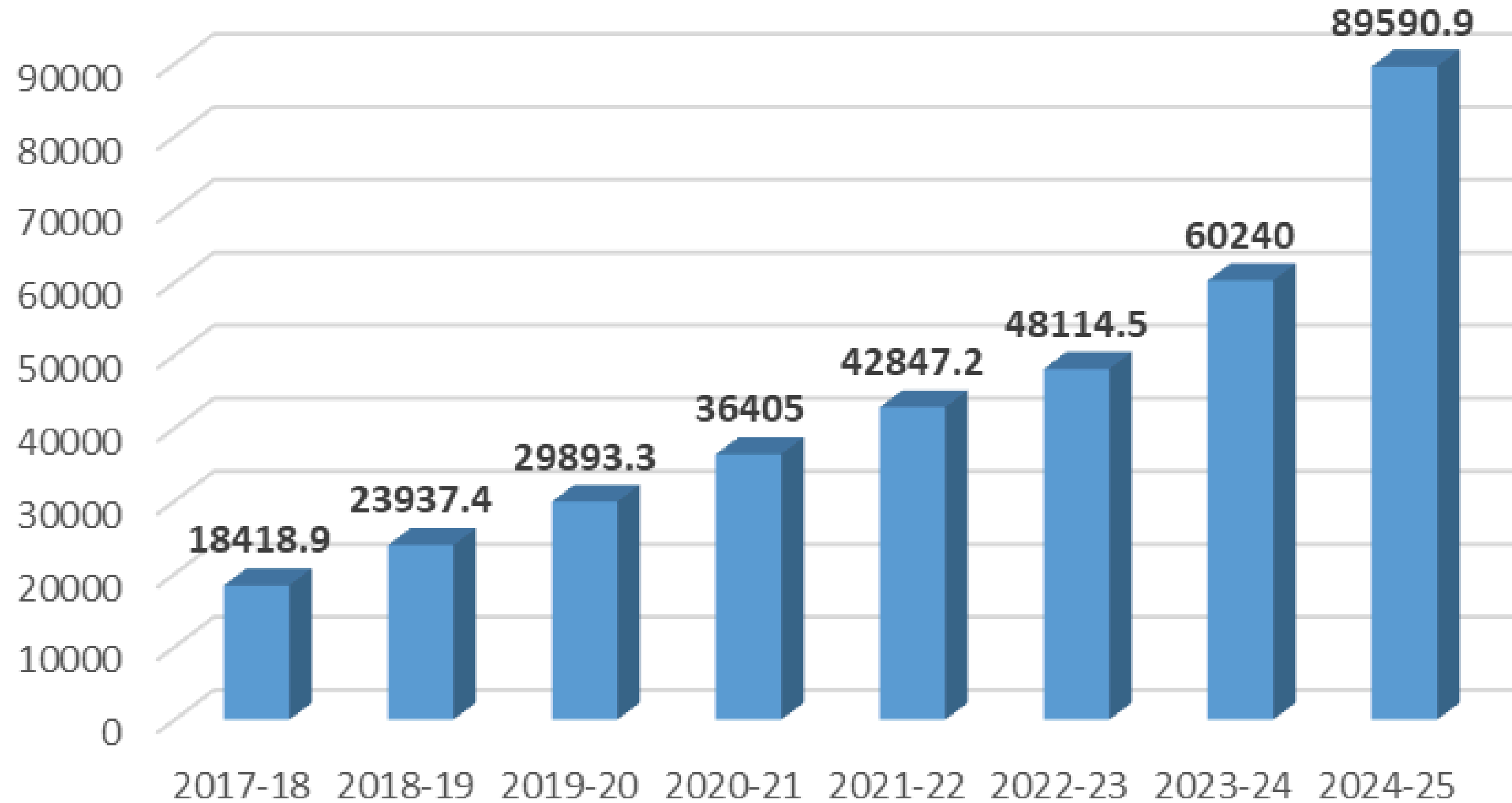
# RATIOS

Particulars	31.03.25	31.03.24	31.03.23	31.03.22	31.03.21
EBITDA (in Rs. Lacs)	9042.3	5700.41	4702.17	2905.96	2431.76
Total Production	36129	23019	19030	19747	19712
EBITDA per Metric Tonne	25027.82	24763.93	24709.2	14716	12336.4

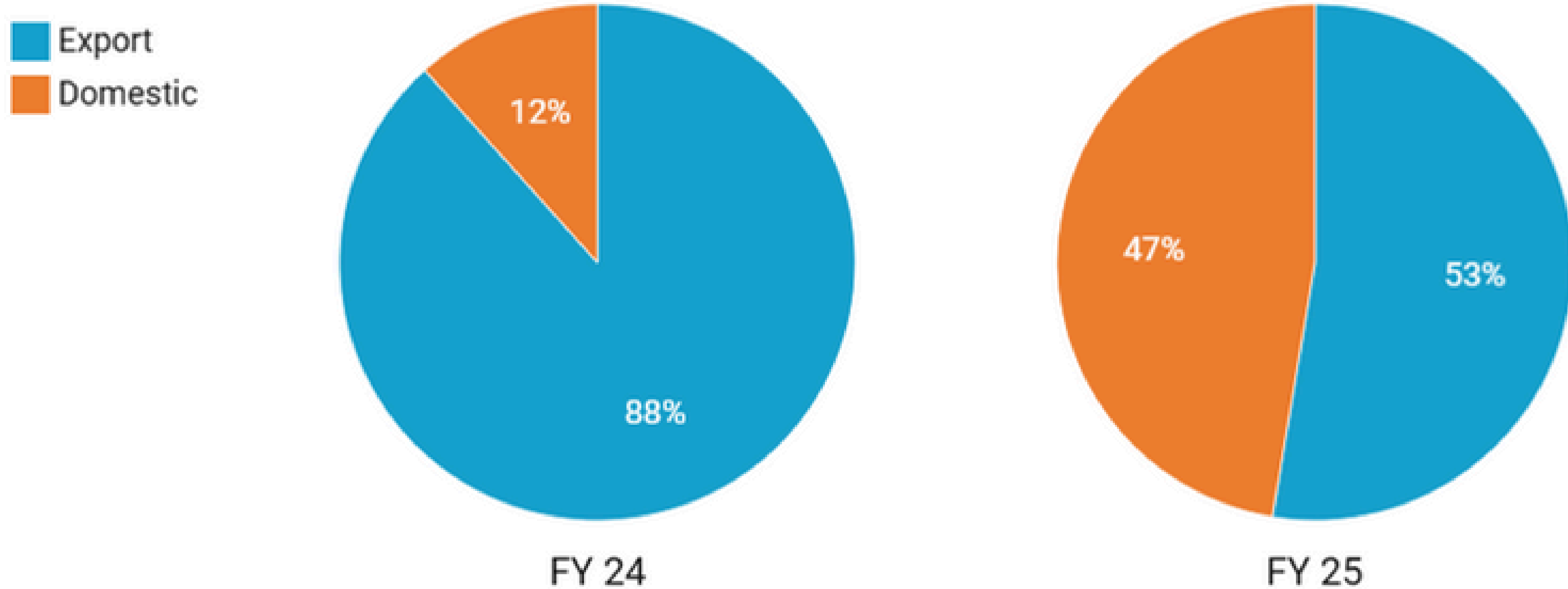
## EBITDA PER TONNE



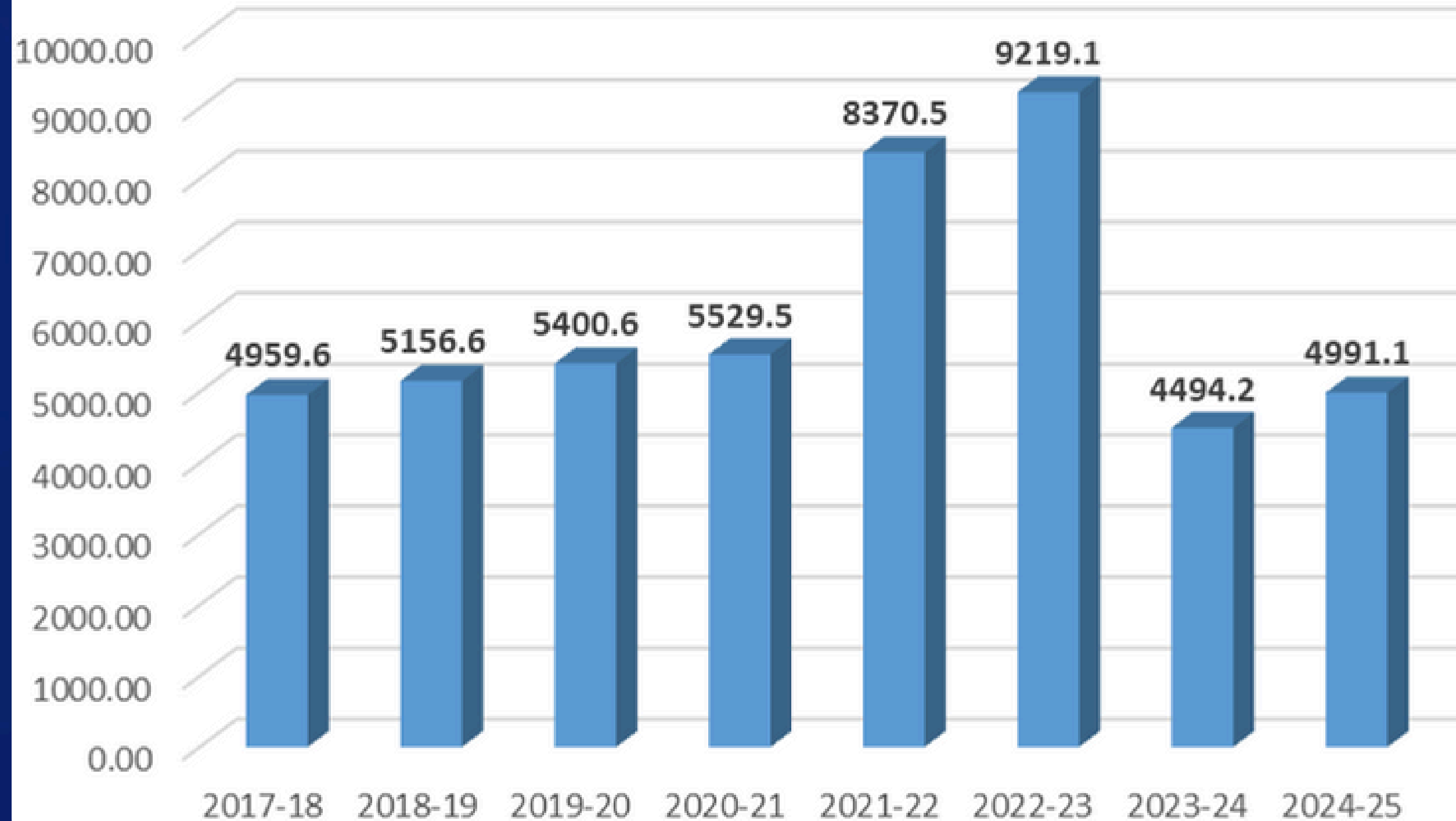
## TOTAL SALES GROWTH OVER FY 2018–FY 2025 (IN LAKHS)



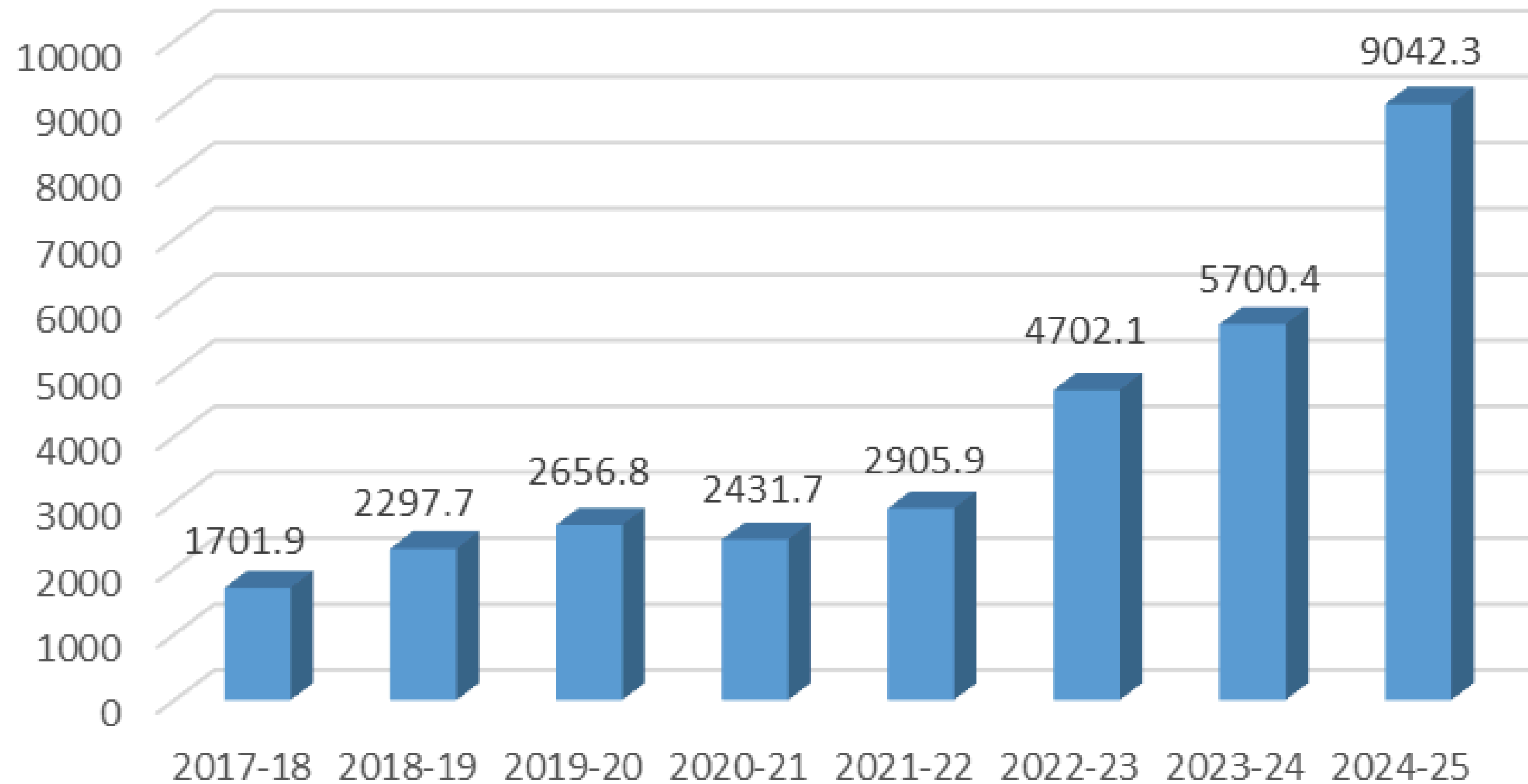
## GROWTH IN WASHER SALES DOMESTIC VS EXPORT FY 24- FY 25



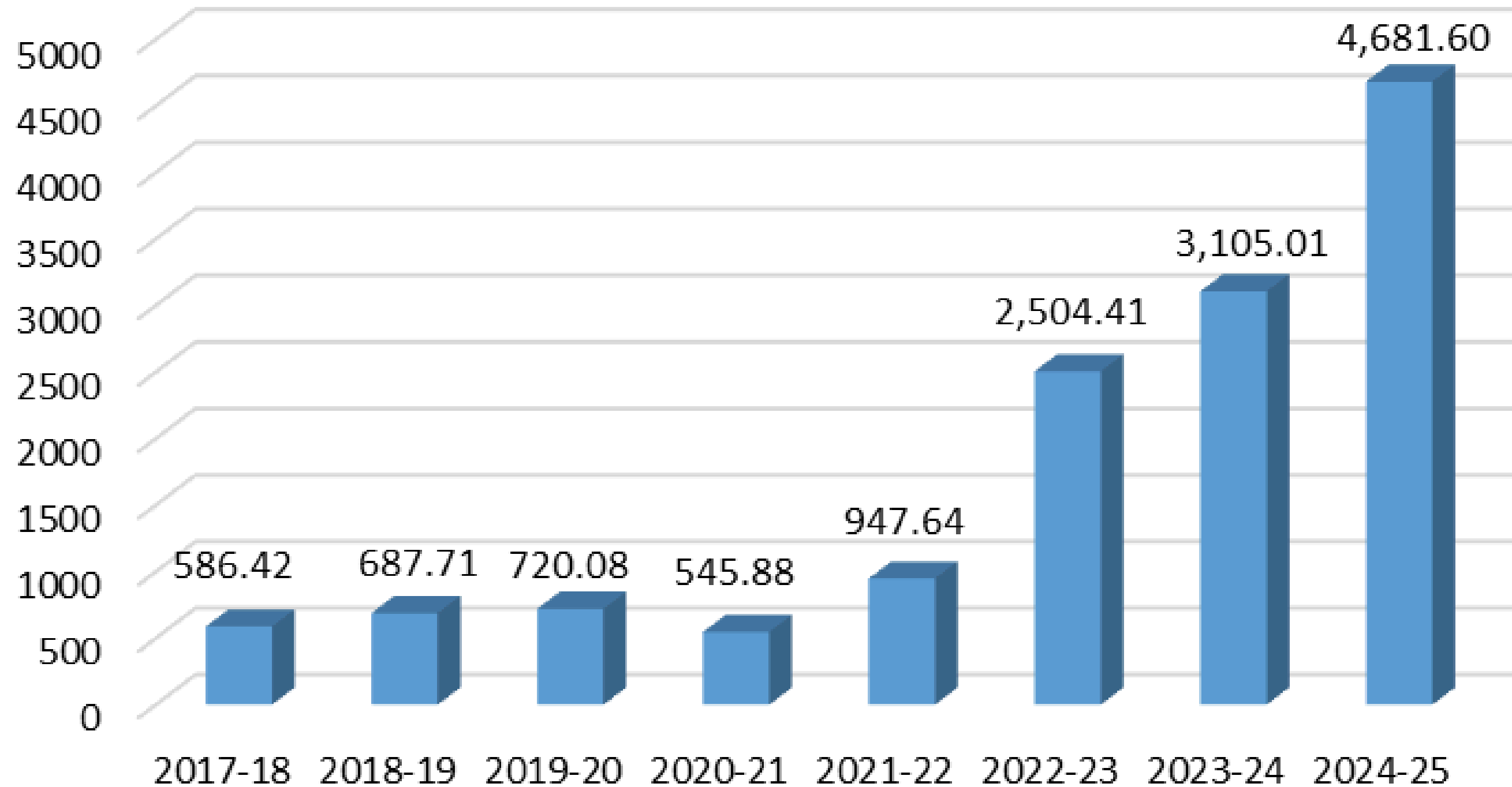
## EXPORT SALES GROWTH IN RECENT YEARS (IN LAKHS)



## EBITDA ( RS. IN LAKHS)



## PROFIT AFTER TAX ( RS. IN LAKHS)



# OUR LEGACY, LEADERSHIP & RECOGNITION





## OUR COMMITMENT TO QUALITY



- Ratnaveer Precision Engineering Ltd. is certified to ISO 9001, ISO 14001, ISO 18001 and holds CE certification. Guided by our “Customer First” philosophy, we consistently deliver world-class products.
- Our comprehensive, fully documented quality management system includes rigorous internal training and meticulous record-keeping. A highly experienced quality team ensures we produce superior components that drive our clients’ success.

# VISION 2025 AND BEYOND: BUILDING OUR LEGACY

Ratnaveer Precision Engineering Ltd. aims to achieve ₹1,900 Cr in revenue by FY 2028. This bold target reflects our commitment to sustainable growth, innovation and market leadership. By optimizing our resources, seizing industry opportunities and executing a focused expansion strategy, we will hit this milestone and cement our position as India's segment frontrunner.



**₹1,900 Cr  
Revenue**



**14%  
EBITDA**



**# 1  
in India**  
In our segment



**₹315 Cr  
Asset Holdings**



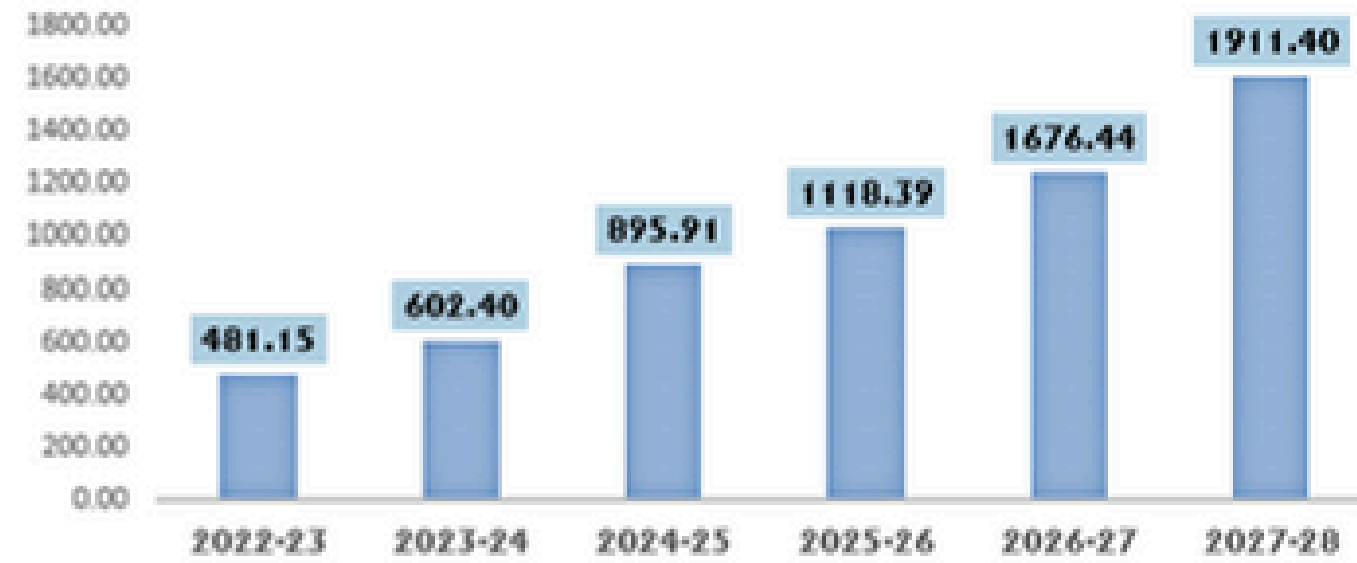
**8.5 %  
PAT**



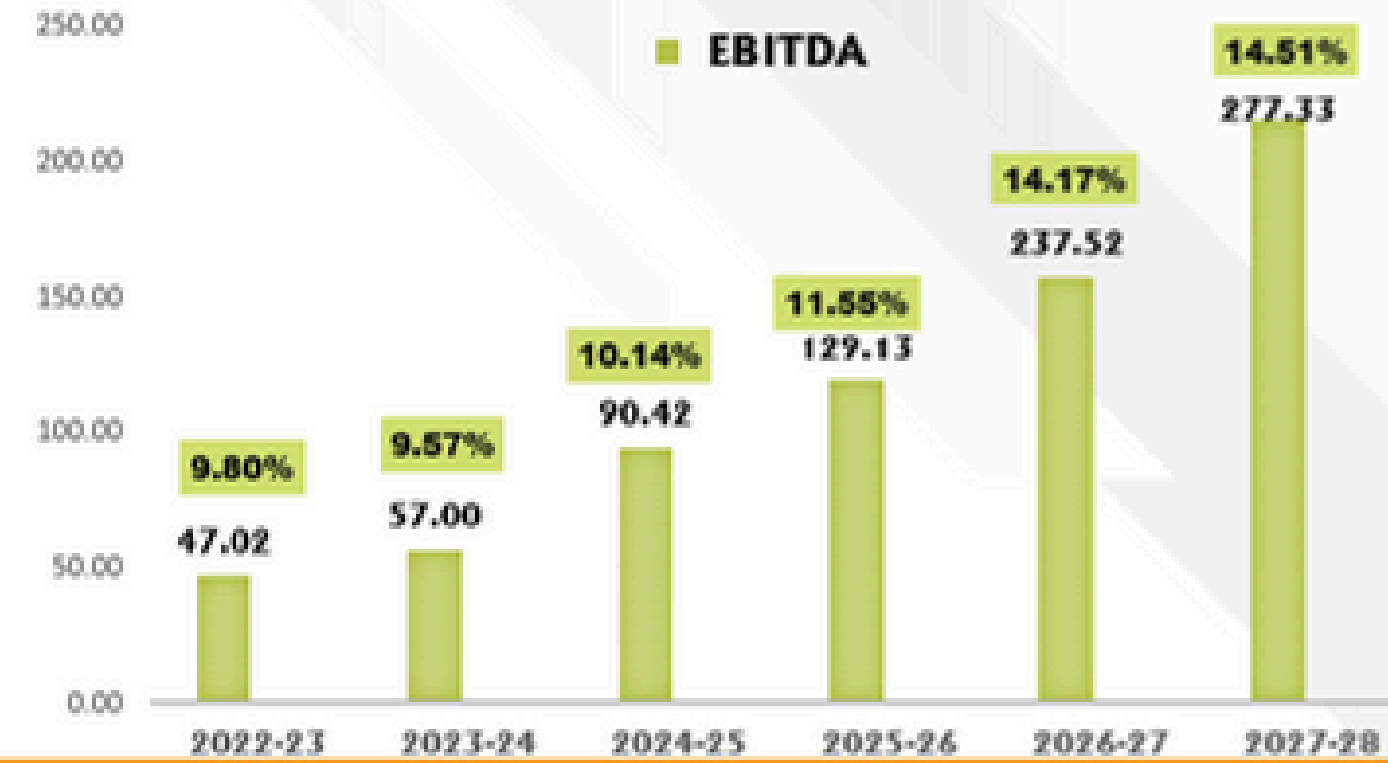
**RATNAVEER PRECISION ENGINEERING LIMITED**
**KEY PROJECTION OF THE COMPANY**
**(Rs. in Crores)**

<b>Particulars</b>	<b>2022-23</b>	<b>2023-24</b>	<b>2024-25</b>	<b>2025-26</b>	<b>2026-27</b>	<b>2027-28</b>
<b>Total Income</b>	<b>481.15</b>	<b>602.40</b>	<b>895.91</b>	<b>1,118.39</b>	<b>1,676.44</b>	<b>1,911.40</b>
<b>EBITDA</b>	<b>47.02</b>	<b>57.00</b>	<b>90.42</b>	<b>129.13</b>	<b>237.52</b>	<b>277.33</b>
<b>EBITDA ( % )</b>	<b>9.80%</b>	<b>9.57%</b>	<b>10.14%</b>	<b>11.55%</b>	<b>14.17%</b>	<b>14.51%</b>
<b>PAT</b>	<b>25.03</b>	<b>31.04</b>	<b>46.82</b>	<b>58.69</b>	<b>132.96</b>	<b>162.23</b>
<b>PAT ( % )</b>	<b>5.20%</b>	<b>5.15%</b>	<b>5.23%</b>	<b>5.25%</b>	<b>7.93%</b>	<b>8.49%</b>
<b>TNW</b>	<b>106.05</b>	<b>252.11</b>	<b>370.96</b>	<b>630.79</b>	<b>763.74</b>	<b>925.97</b>
<b>Total Borrowings</b>	<b>219.60</b>	<b>181.80</b>	<b>195.12</b>	<b>172.15</b>	<b>161.53</b>	<b>149.12</b>
<b>Debt Equity</b>	<b>2.07</b>	<b>0.72</b>	<b>0.23</b>	<b>0.27</b>	<b>0.21</b>	<b>0.16</b>
<b>Fixed Asset</b>	<b>58.59</b>	<b>68.25</b>	<b>158.07</b>	<b>273.18</b>	<b>299.88</b>	<b>315.36</b>

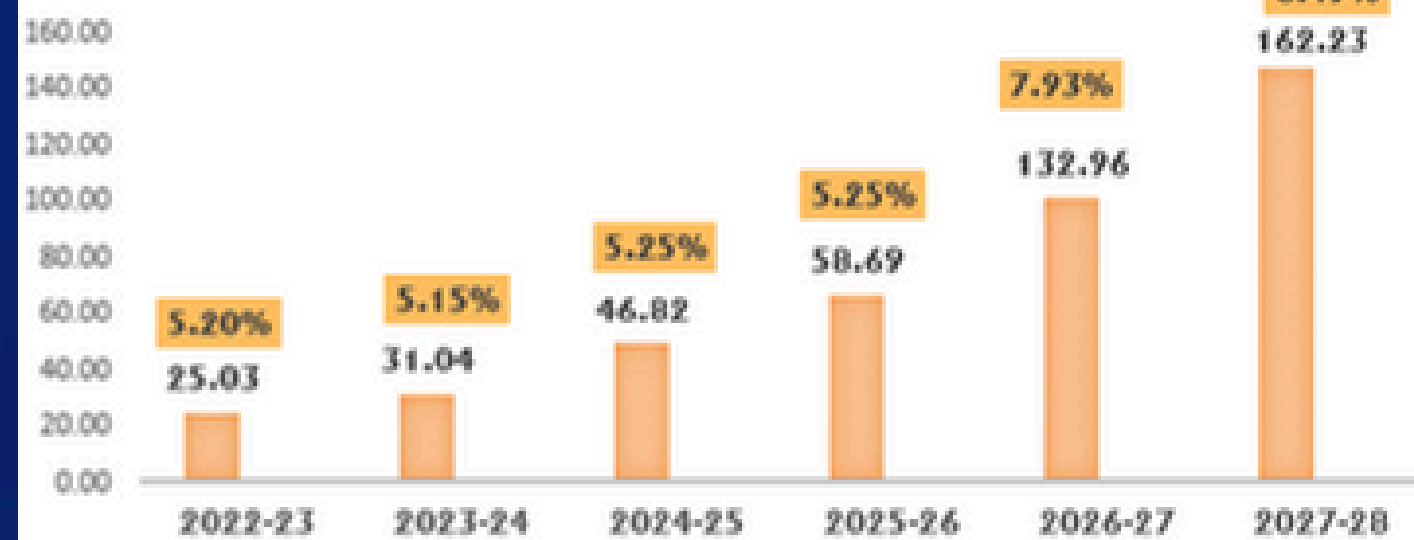
### TOTAL INCOME



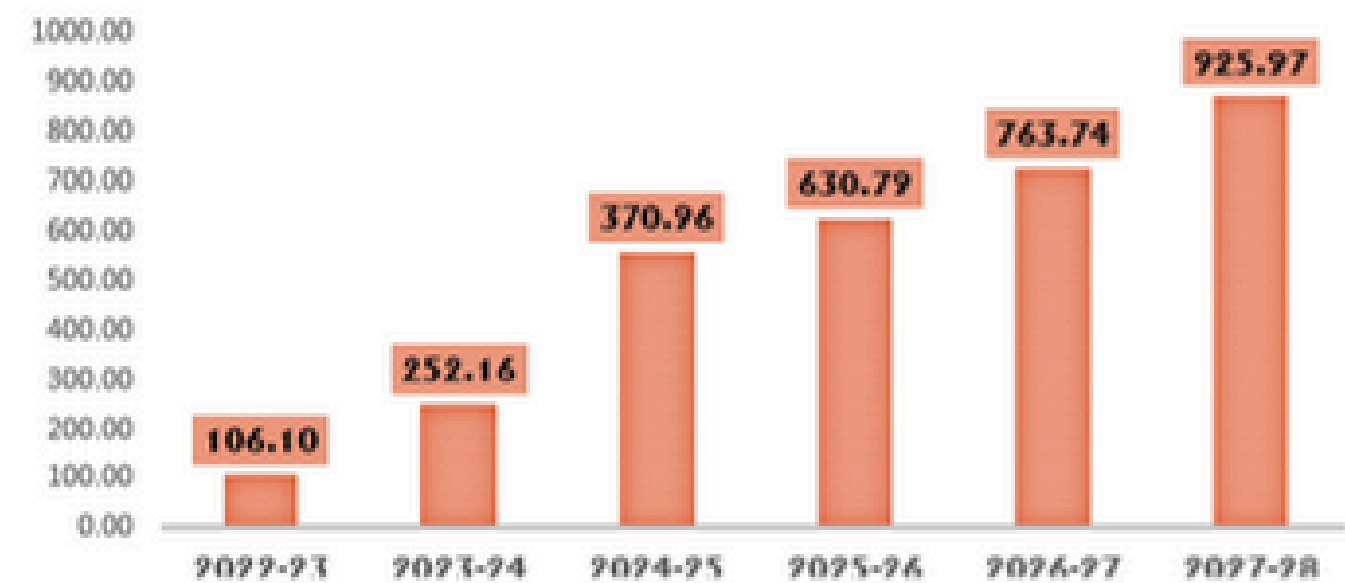
### EBITDA



### PAT



### NET WORTH



Rs. in Crores

# OUR GLOBAL CLIENTELE



## OUR GLOBAL CLIENTELE



# FORGING OUR INDUSTRY LEADERSHIP

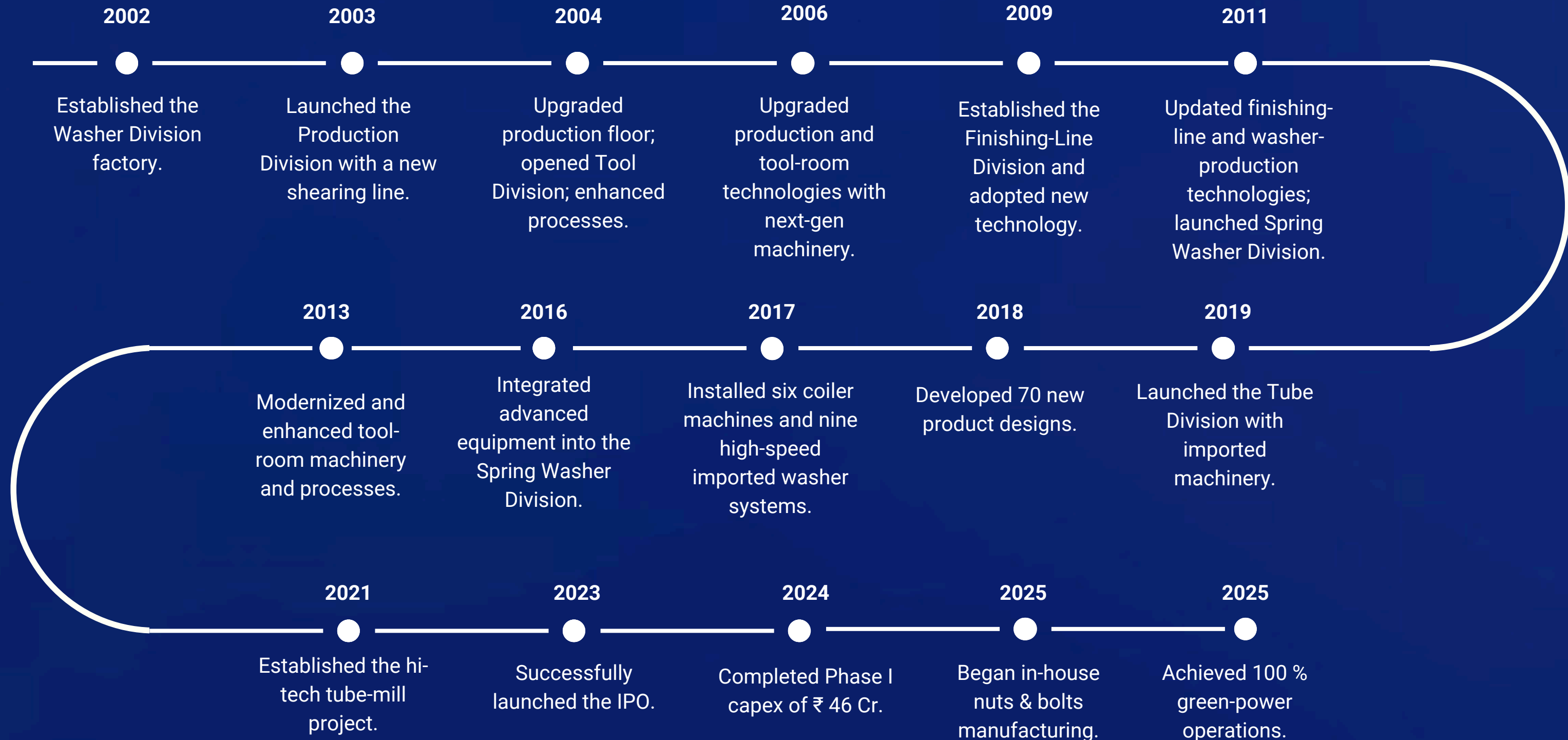


Ratnaveer is committed to transforming the washer market by becoming the premier manufacturer. Through relentless innovation, unwavering quality standards, and a customer-first approach, we will surpass competitors and solidify our position as the industry benchmark.

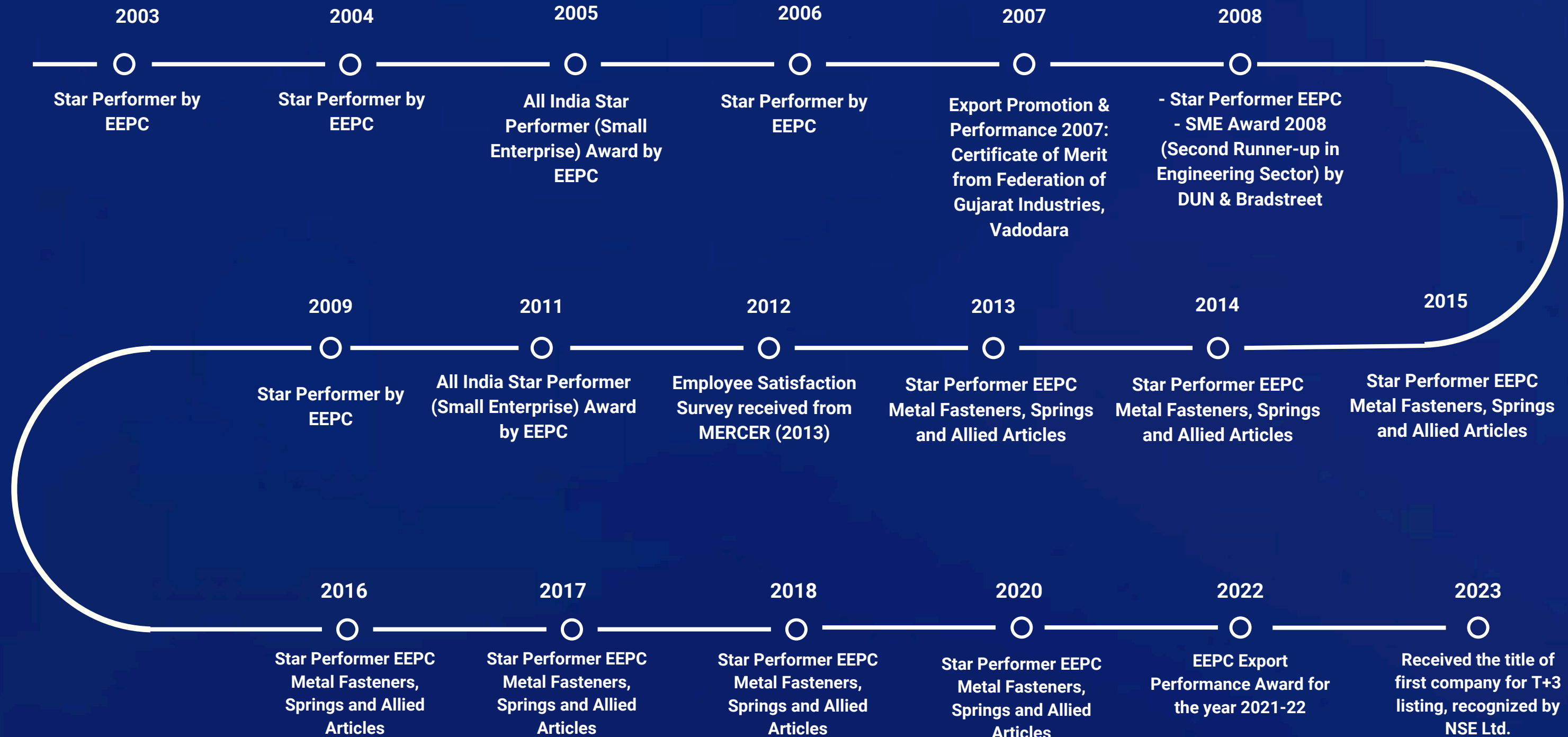
This bold ambition highlights our dedication to excellence and our vision to shape the future of the washer segment.

With full accreditation for **100% green power**, we are investing in renewable energy, green infrastructure, and efficiency initiatives. By forging strategic partnerships and optimizing our energy footprint, we are building a sustainable future where clean, renewable sources drive our operations—and power our world.

# KEY MILESTONES



# AWARDS & MILESTONES



# THANK YOU

we value your continued trust.

For further questions, please send your email to  
[finance@ratnaveer.com](mailto:finance@ratnaveer.com)

RATNAVEER PRECISION ENGINEERING LTD